

\$1,800,000 - 9803 213 Street, Edmonton

MLS® #E4456727

\$1,800,000

0 Bedroom, 0.00 Bathroom,
Land Commercial on 0.00 Acres

Lewis Farms Industrial, Edmonton, AB

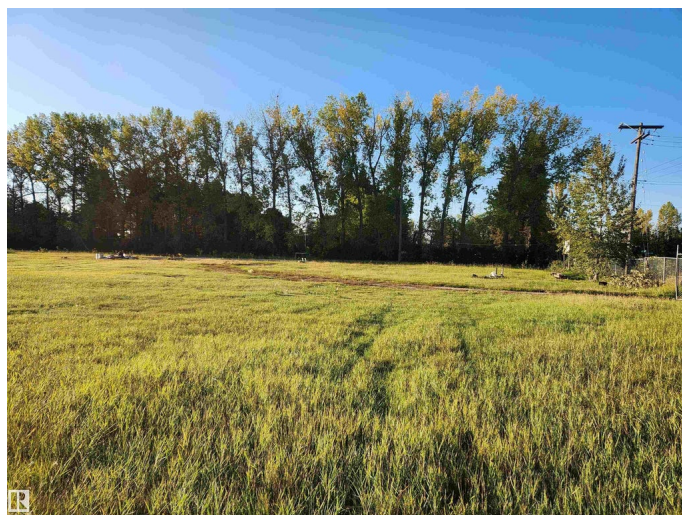
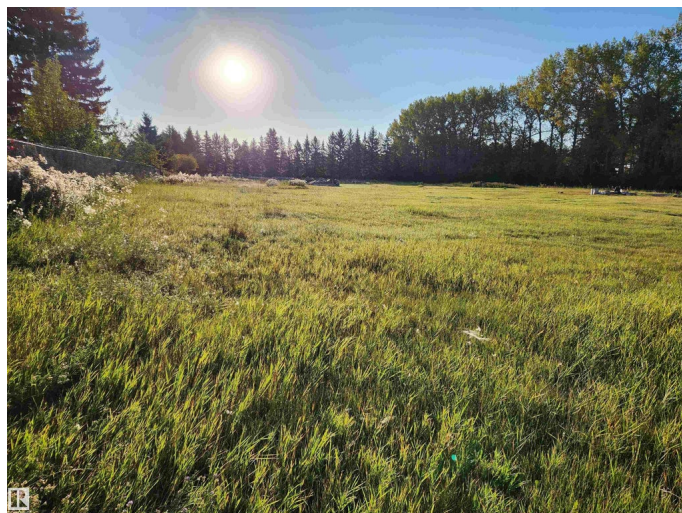
Beautiful 3.21 Acres with mature trees and fence surrounding perimeter. Located just behind Winterburn School and Lewis Estate in Lewis Farms. This DC1 Zoning lot have endless possibilities with an amazing views to build commercial and retail or simple hold as your own private retreat within the city. Prime location providing quick easy access to School, Bus, Shopping, Stony Plain Road, Anthony Henday and Yellowhead Trail.

Essential Information

MLS® #	E4456727
Price	\$1,800,000
Bathrooms	0.00
Acres	0.00
Type	Land Commercial
Status	Active

Community Information

Address	9803 213 Street
Area	Edmonton
Subdivision	Lewis Farms Industrial
City	Edmonton
County	ALBERTA
Province	AB
Postal Code	T5T 5X9



Additional Information

Date Listed	September 5th, 2025
Days on Market	4
Zoning	Zone 58

DATA IS DEEMED RELIABLE BUT IS NOT GUARANTEED ACCURATE BY THE REALTORS® ASSOCIATION OF EDMONTON. COPYRIGHT 2025 BY THE REALTORS® ASSOCIATION OF EDMONTON. ALL RIGHTS RESERVED.Trademarks are owned or controlled by the Canadian Real Estate Association (CREA) and identify real estate professionals who are members of CREA (REALTOR®, REALTORS®) and/or the quality of services they provide (MLS®, Multiple Listing Service®)

Listing information last updated on September 9th, 2025 at 5:02pm MDT