

\$575,000 - 707 200 Bellerose Drive, St. Albert

MLS® #E4453298

\$575,000

2 Bedroom, 2.00 Bathroom, 1,059 sqft

Condo / Townhouse on 0.00 Acres

Oakmont, St. Albert, AB

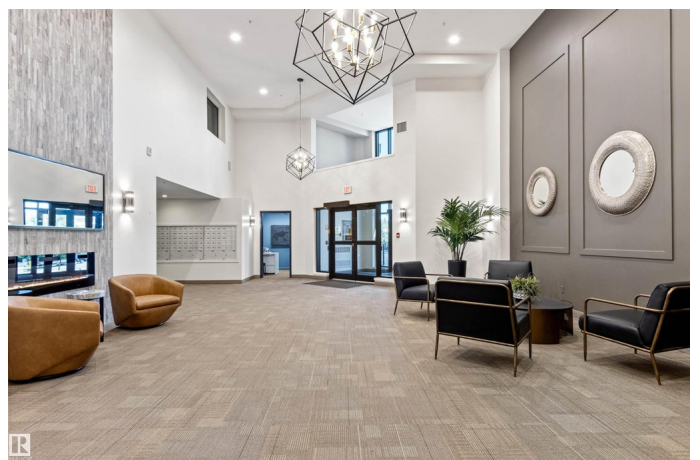
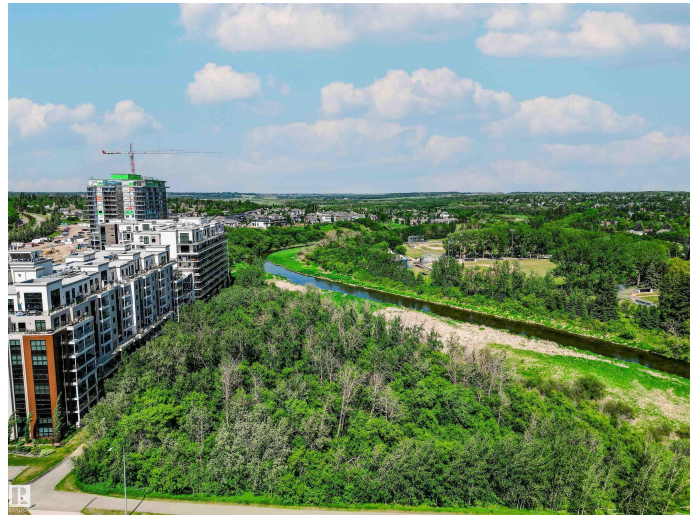
Welcome to the Impeccably Managed Botanica, where luxury and lifestyle converge in this air-conditioned 2-bed, 2-bath condo with an optional Second Titled Parking Stall. Enjoy a sophisticated open-concept layout with expansive southwest-facing windows that flood the space with natural light and offer unobstructed STUNNING SW VIEWS. The UPGRADED chef's kitchen features custom cabinetry with pull-out shelves and ample GRANITE counter space for culinary creations. The primary suite is a true retreat with a walk-through closet and spa-inspired 5-piece ensuite, while the second bedroom offers flexibility for guests or a home office. Residents have exclusive access to a social lounge with full kitchen and patio, a two-level fitness centre, and a rooftop party deck with panoramic vistas. Located steps from St. Albert's finest cafes, bakeries, restaurants, green spaces and riverside hiking and biking trails. Also in-suite laundry, heated underground titled parking, and private storage complete the package.

Built in 2016

Essential Information

MLS® # E4453298

Price \$575,000



Bedrooms	2
Bathrooms	2.00
Full Baths	2
Square Footage	1,059
Acres	0.00
Year Built	2016
Type	Condo / Townhouse
Sub-Type	Apartment High Rise
Style	Single Level Apartment
Status	Active

Community Information

Address	707 200 Bellerose Drive
Area	St. Albert
Subdivision	Oakmont
City	St. Albert
County	ALBERTA
Province	AB
Postal Code	T8N 7P7

Amenities

Amenities	Air Conditioner, Deck, Exercise Room, No Animal Home, No Smoking Home, Parking-Visitor, Party Room, Patio, Smart/Program. Thermostat, Recreation Room/Centre, Secured Parking, Security Door, Social Rooms, Storage Cage, Natural Gas BBQ Hookup, Rooftop Deck/Patio
Parking Spaces	2
Parking	Heated, Underground

Interior

Interior Features	ensuite bathroom
Appliances	Air Conditioning-Central, Dishwasher-Built-In, Hood Fan, Intercom, Oven-Built-In, Oven-Microwave, Refrigerator, Stacked Washer/Dryer, Stove-Countertop Electric, TV Wall Mount, Curtains and Blinds
Heating	Fan Coil, Natural Gas
Fireplace	Yes
Fireplaces	Glass Door, Remote Control, Tile Surround
# of Stories	10
Stories	1
Has Basement	Yes

Basement None, No Basement

Exterior

Exterior Concrete, Stucco

Exterior Features Backs Onto Park/Trees, Fruit Trees/Shrubs, Golf Nearby, Landscaped, Low Maintenance Landscape, Picnic Area, Public Transportation, River Valley View, Schools, Shopping Nearby, Vegetable Garden, View City

Roof EPDM Membrane

Construction Concrete, Stucco

Foundation Concrete Perimeter

School Information

Elementary Kinosayo Elementary

Middle William D. Cuts

High Bellerose Highschool

Additional Information

Date Listed August 15th, 2025

Days on Market 1

Zoning Zone 24

Condo Fee \$499

DATA IS DEEMED RELIABLE BUT IS NOT GUARANTEED ACCURATE BY THE REALTORS® ASSOCIATION OF EDMONTON. COPYRIGHT 2025 BY THE REALTORS® ASSOCIATION OF EDMONTON. ALL RIGHTS RESERVED.Trademarks are owned or controlled by the Canadian Real Estate Association (CREA) and identify real estate professionals who are members of CREA (REALTOR®, REALTORS®) and/or the quality of services they provide (MLS®, Multiple Listing Service®)

Listing information last updated on August 16th, 2025 at 5:02pm MDT