

\$1,099,999 - 1070 50242 Rge Road 244 A, Rural Leduc County

MLS® #E4453190

\$1,099,999

5 Bedroom, 4.50 Bathroom, 2,746 sqft

Rural on 3.27 Acres

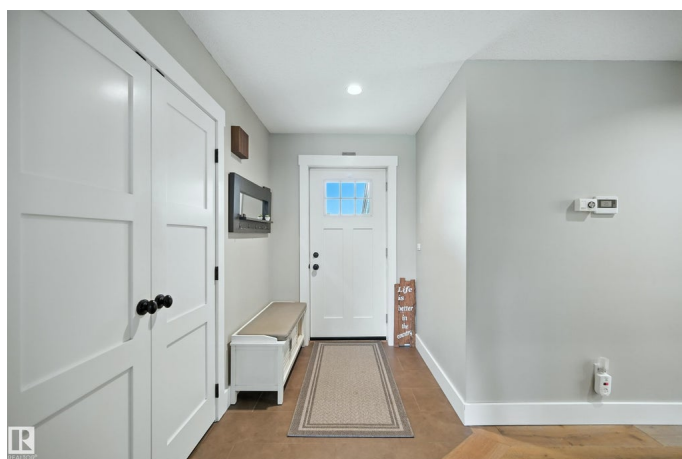
Brenda Vista, Rural Leduc County, AB

Experience luxury acreage living in this fully renovated 2-storey on 3.27 serene, treed acres in prestigious South Vistas! Just minutes to Beaumont, Nisku, Leduc & 12 min to S. Edmonton. This private retreat backs farmland & features a south-facing yard, triple tree lines & resort-like outdoor spaces. Inside: soaring 23'™ cedar ceilings, 2 stone wood-burning fireplaces, engineered hardwood, full & half baths, office/5th bed & a showpiece kitchen w/ 2 islands, granite & butcher block, SS appliances, heated covered deck & 4 season sun room. Upstairs: 3 spacious beds incl. vaulted primary w/ ensuite, 2 additional beds, 5 pc bath & laundry. Brand-new basement w/ rec room, wet bar, bed, bath & SEPARATE ENTRY from garage and unfinished area to develop 2nd suite. Heated double garage, Gemstone LED lights, 3 decks, firepits, Par 3 golf holes, patio, sheds, Quonset, RV parking & more. City water, newer septic™move-in ready!

Built in 1980

Essential Information

MLS® #	E4453190
Price	\$1,099,999
Bedrooms	5



Bathrooms	4.50
Full Baths	4
Half Baths	1
Square Footage	2,746
Acres	3.27
Year Built	1980
Type	Rural
Sub-Type	Detached Single Family
Style	2 Storey
Status	Active

Community Information

Address	1070 50242 Rge Road 244 A
Area	Rural Leduc County
Subdivision	Brenda Vista
City	Rural Leduc County
County	ALBERTA
Province	AB
Postal Code	T4X 0P4

Amenities

Features	Closet Organizers, Deck, Fire Pit, Parking-Extra, R.V. Storage, Recreation Room/Centre, Sunroom, Vaulted Ceiling, Wet Bar, See Remarks
----------	--

Interior

Interior Features	ensuite bathroom
Heating	Forced Air-2, Natural Gas
Fireplace	Yes
Stories	3
Has Basement	Yes
Basement	Full, Finished

Exterior

Exterior	Wood
Exterior Features	Airport Nearby, Flat Site, Landscaped, Schools, Treed Lot, See Remarks
Construction	Wood
Foundation	Concrete Perimeter

Additional Information

Date Listed August 15th, 2025

Days on Market 1

Zoning Zone 80

DATA IS DEEMED RELIABLE BUT IS NOT GUARANTEED ACCURATE BY THE REALTORS® ASSOCIATION OF EDMONTON. COPYRIGHT 2025 BY THE REALTORS® ASSOCIATION OF EDMONTON. ALL RIGHTS RESERVED. Trademarks are owned or controlled by the Canadian Real Estate Association (CREA) and identify real estate professionals who are members of CREA (REALTOR®, REALTORS®) and/or the quality of services they provide (MLS®, Multiple Listing Service®)

Listing information last updated on August 16th, 2025 at 4:32pm MDT