

# **\$212,000 - 50 26413 Twp Road 510, Rural Parkland County**

---

MLS® #E4453149

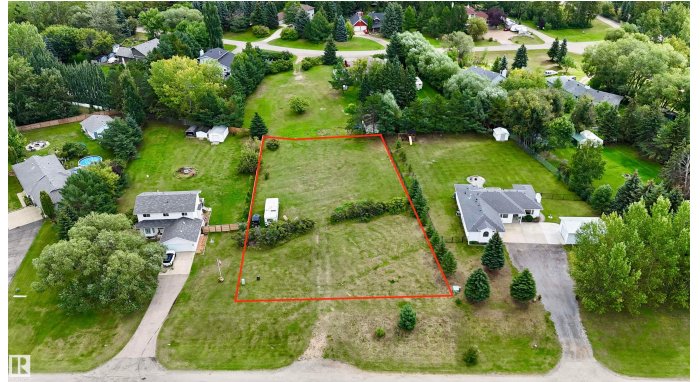
**\$212,000**

0 Bedroom, 0.00 Bathroom,  
Rural on 0.60 Acres

Grand River Valley Estates, Rural Parkland County, AB

**OVER 1/2 ACRE RIVER VALLEY LOT!**

Situated in the beautiful, mature, and PAVED neighbourhood of GRAND RIVER VALLEY ESTATES. Within walking distance to the North Saskatchewan River & right beside all amenities Devon has to offer! Boating, fishing, gold panning and hiking are all available in your backyard with walking trails to Prospectors Point Rec Area! BONUS - The Devonian trail system leads you right to the U of A Botanical Gardens! You can also Hike/Bike the River Vally Alliance trail system heading west into Edmonton & Ft Sask. Only a few min drive to Devon, PLUS Devon's Voyageur Park facilities & trail system! 20 min drive to the International Airport, 15 min to NISKU, SW Edmonton, or Acheson! OPPORTUNITY TO CREATE YOUR DREAM ACREAGE on the North Sask river bank and so close to all parks, schools, golf courses & the rapidly growing SW Edmonton corridor!



## **Essential Information**

MLS® #	E4453149
Price	\$212,000
Bathrooms	0.00
Acres	0.60

Type	Rural
Sub-Type	Vacant Lot/Land
Status	Active

### Community Information

Address	50 26413 Twp Road 510
Area	Rural Parkland County
Subdivision	Grand River Valley Estates
City	Rural Parkland County
County	ALBERTA
Province	AB
Postal Code	T7Y 1E2

### Exterior

Exterior Features	Flat Site, Golf Nearby, Schools, Shopping Nearby, Treed Lot, Partially Fenced
-------------------	---

### Additional Information

Date Listed	August 15th, 2025
Days on Market	1
Zoning	Zone 90

DATA IS DEEMED RELIABLE BUT IS NOT GUARANTEED ACCURATE BY THE REALTORS® ASSOCIATION OF EDMONTON. COPYRIGHT 2025 BY THE REALTORS® ASSOCIATION OF EDMONTON. ALL RIGHTS RESERVED. Trademarks are owned or controlled by the Canadian Real Estate Association (CREA) and identify real estate professionals who are members of CREA (REALTOR®, REALTORS®) and/or the quality of services they provide (MLS®, Multiple Listing Service®)

Listing information last updated on August 16th, 2025 at 7:43am MDT