

\$144,900 - 307 42 Alpine Place, St. Albert

MLS® #E4450289

\$144,900

2 Bedroom, 1.00 Bathroom, 879 sqft

Condo / Townhouse on 0.00 Acres

Akinsdale, St. Albert, AB

#rd floor (top floor) 2 bedroom 1 bathroom with balcony and view of park/schoolyard.

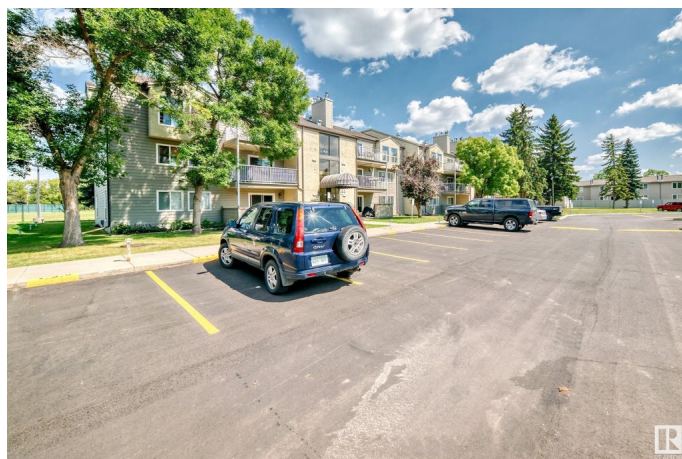
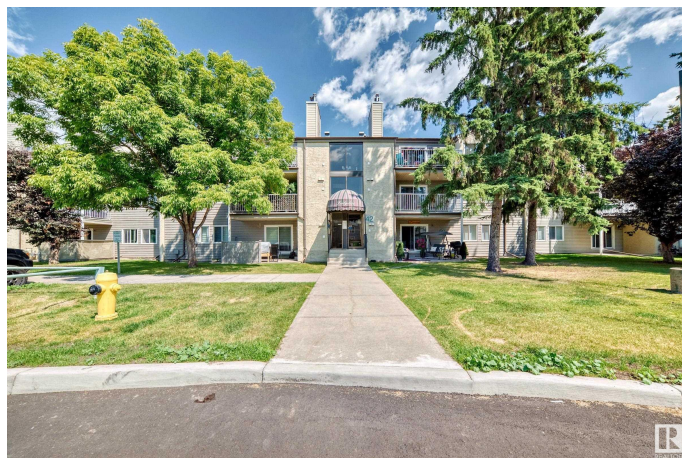
Built in 1982

Essential Information

MLS® #	E4450289
Price	\$144,900
Bedrooms	2
Bathrooms	1.00
Full Baths	1
Square Footage	879
Acres	0.00
Year Built	1982
Type	Condo / Townhouse
Sub-Type	Lowrise Apartment
Style	Single Level Apartment
Status	Active

Community Information

Address	307 42 Alpine Place
Area	St. Albert
Subdivision	Akinsdale
City	St. Albert
County	ALBERTA
Province	AB
Postal Code	T8N 3Y2



Amenities

Amenities	Hot Water Natural Gas, Security Door, Vinyl Windows
Parking	2 Outdoor Stalls

Interior

Appliances	Dishwasher-Built-In, Dryer, Refrigerator, Stove-Electric, Washer
Heating	Forced Air-1, Natural Gas
# of Stories	3
Stories	1
Has Basement	Yes
Basement	None, No Basement

Exterior

Exterior	Wood
Exterior Features	Backs Onto Park/Trees
Roof	Asphalt Shingles
Construction	Wood
Foundation	Concrete Perimeter

Additional Information

Date Listed	July 30th, 2025
Days on Market	2
Zoning	Zone 24
Condo Fee	\$495

DATA IS DEEMED RELIABLE BUT IS NOT GUARANTEED ACCURATE BY THE REALTORS® ASSOCIATION OF EDMONTON. COPYRIGHT 2025 BY THE REALTORS® ASSOCIATION OF EDMONTON. ALL RIGHTS RESERVED. Trademarks are owned or controlled by the Canadian Real Estate Association (CREA) and identify real estate professionals who are members of CREA (REALTOR®, REALTORS®) and/or the quality of services they provide (MLS®, Multiple Listing Service®)

Listing information last updated on August 1st, 2025 at 4:47am MDT