

\$490,000 - 1330 George Close, Edmonton

MLS® #E4449381

\$490,000

3 Bedroom, 2.50 Bathroom, 1,418 sqft

Single Family on 0.00 Acres

Glastonbury, Edmonton, AB

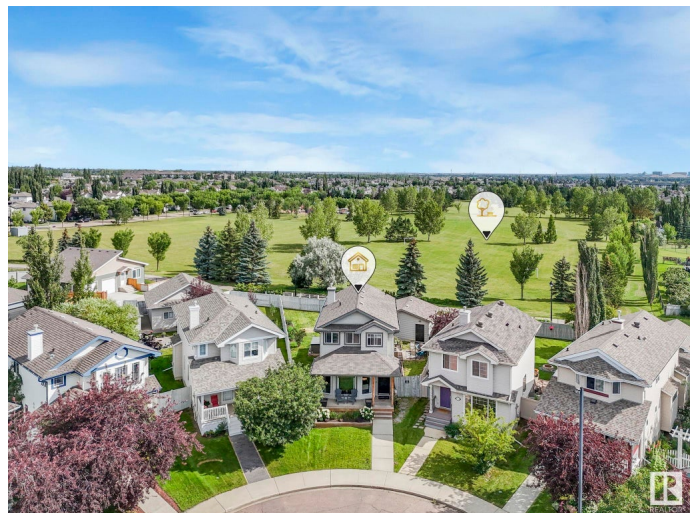
Tucked away on a quiet cul-de-sac and backing directly onto a scenic park, this beautifully decorated 2-bedroom, 2-bathroom home offers a perfect blend of style, comfort, & community. Inside, enjoy 2 oversized bedrooms with large windows that let in an abundance of natural light. Gleaming hardwood floors, tasteful decor, & a bright, open layout make this home both functional & inviting. The U-shaped kitchen is well-equipped with stainless steel appliances, plenty of cabinet and counter space, & opens to a spacious dining area. A stunning 6-ft high window offers picturesque views of your park-backed backyard. The main bathroom is a true showstopper-a luxurious retreat featuring imported Italian tile, a freestanding clawfoot tub, rain head shower, European fixtures, a pedestal sink, and a freestanding light-generated fireplace for ultimate relaxation. Step outside to your massive pie-shaped lot. The park hosts many fun, family-friendly community events! This rare gem combines location, design, & community!

Built in 2002

Essential Information

MLS® # E4449381

Price \$490,000



Bedrooms	3
Bathrooms	2.50
Full Baths	2
Half Baths	1
Square Footage	1,418
Acres	0.00
Year Built	2002
Type	Single Family
Sub-Type	Detached Single Family
Style	2 Storey
Status	Active

Community Information

Address	1330 George Close
Area	Edmonton
Subdivision	Glastonbury
City	Edmonton
County	ALBERTA
Province	AB
Postal Code	T5T 6S2

Amenities

Amenities	R.V. Storage, See Remarks
Parking Spaces	4
Parking	Double Garage Detached, RV Parking

Interior

Appliances	Garage Control, Garage Opener, Hood Fan, Refrigerator, Stove-Electric, Window Coverings, See Remarks, TV Wall Mount
Heating	Forced Air-1, Natural Gas
Fireplace	Yes
Fireplaces	Freestanding
Stories	3
Has Basement	Yes
Basement	Full, Finished

Exterior

Exterior	Wood, Vinyl
Exterior Features	Backs Onto Park/Trees, Cul-De-Sac, Fenced, Flat Site, Landscaped,

Playground Nearby, Public Transportation, Schools, Shopping Nearby

Roof	Asphalt Shingles
Construction	Wood, Vinyl
Foundation	Concrete Perimeter

School Information

Elementary	Kim Hung School
Middle	Kim Hung School
High	Jasper Place School

Additional Information

Date Listed	July 24th, 2025
Days on Market	3
Zoning	Zone 58
HOA Fees	200
HOA Fees Freq.	Annually

DATA IS DEEMED RELIABLE BUT IS NOT GUARANTEED ACCURATE BY THE REALTORS® ASSOCIATION OF EDMONTON. COPYRIGHT 2025 BY THE REALTORS® ASSOCIATION OF EDMONTON. ALL RIGHTS RESERVED. Trademarks are owned or controlled by the Canadian Real Estate Association (CREA) and identify real estate professionals who are members of CREA (REALTOR®, REALTORS®) and/or the quality of services they provide (MLS®, Multiple Listing Service®)

Listing information last updated on July 26th, 2025 at 11:02pm MDT