

\$365,000 - 48 Steele Crescent, Edmonton

MLS® #E4448959

\$365,000

5 Bedroom, 2.00 Bathroom, 1,058 sqft

Single Family on 0.00 Acres

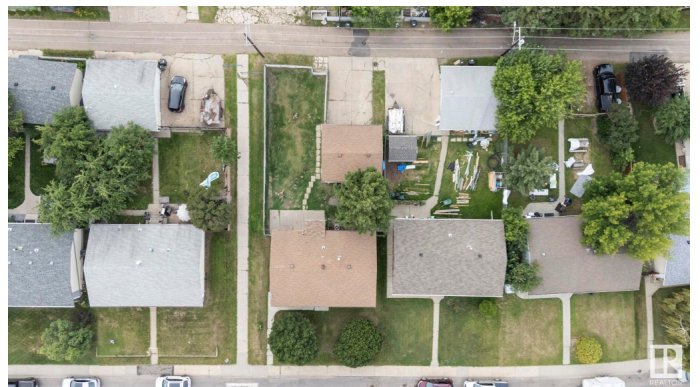
York, Edmonton, AB

Welcome to 48 Steele Crescent, a 5 bed, 2 bath home in the community of York. She is a charming home on a spacious lot in a great community â€” With a walking path right next to you & back alley access this property offers tons of potential with a detached garage and room to make it your own. With a little TLC, and some updates, it could truly shine! How water tank was upgraded in 2023, bay windows are new, and the house has central air conditioning. This property is a fantastic opportunity to build value in a desirable neighbourhood!

Built in 1971

Essential Information

MLS® #	E4448959
Price	\$365,000
Bedrooms	5
Bathrooms	2.00
Full Baths	2
Square Footage	1,058
Acres	0.00
Year Built	1971
Type	Single Family
Sub-Type	Detached Single Family
Style	Bungalow
Status	Active



Community Information

Address	48 Steele Crescent
Area	Edmonton
Subdivision	York
City	Edmonton
County	ALBERTA
Province	AB
Postal Code	T5A 1G3

Amenities

Amenities	Air Conditioner
Parking	Double Garage Detached

Interior

Appliances	Dryer, Hood Fan, Refrigerator, Stove-Electric, Washer
Heating	Forced Air-1, Natural Gas
Stories	2
Has Basement	Yes
Basement	Full, Finished

Exterior

Exterior	Concrete, Vinyl
Exterior Features	Back Lane, Fenced, Fruit Trees/Shrubs, Landscaped, Schools, Shopping Nearby
Roof	Asphalt Shingles
Construction	Concrete, Vinyl
Foundation	Concrete Perimeter

Additional Information

Date Listed	July 21st, 2025
Days on Market	6
Zoning	Zone 02

DATA IS DEEMED RELIABLE BUT IS NOT GUARANTEED ACCURATE BY THE REALTORS® ASSOCIATION OF EDMONTON. COPYRIGHT 2025 BY THE REALTORS® ASSOCIATION OF EDMONTON. ALL RIGHTS RESERVED. Trademarks are owned or controlled by the Canadian Real Estate Association (CREA) and identify real estate professionals who are members of CREA (REALTOR®, REALTORS®) and/or the quality of services they provide (MLS®, Multiple Listing Service®)

Listing information last updated on July 26th, 2025 at 11:02pm MDT