

Courtesy Of Lindsay S Parsons Of Liv Real Estate

\$310,000 - 8329 160 Avenue, Edmonton

MLS® #E4448184

\$310,000

3 Bedroom, 2.50 Bathroom, 1,477 sqft
Condo / Townhouse on 0.00 Acres

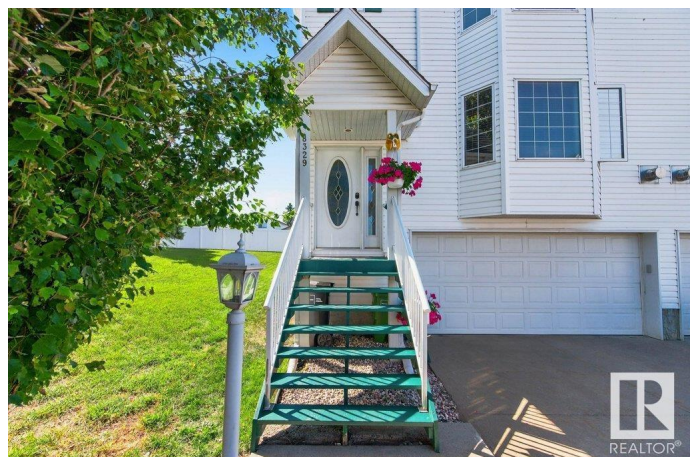
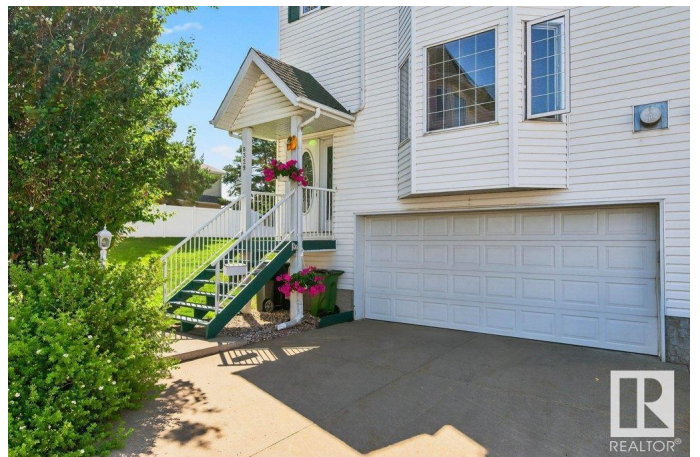
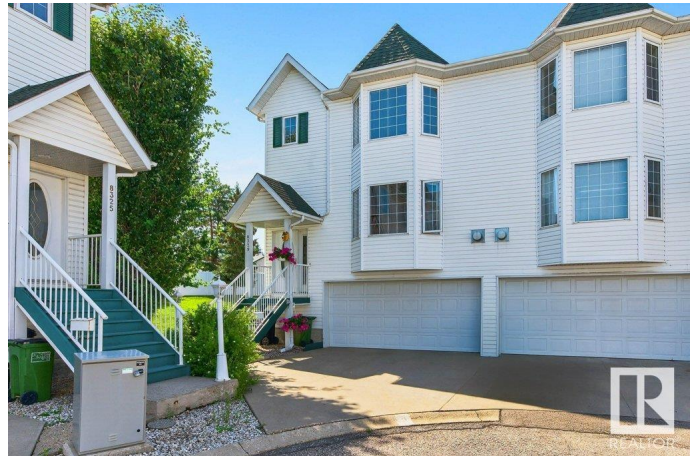
Belle Rive, Edmonton, AB

This stunning end-unit townhome boasts a double-car garage and a host of captivating features. Step inside to discover an inviting living room, complemented by a large bay window and a cozy fireplace. A convenient half bath on the main floor adds a practical touch. The functional kitchen is complete with a window over the sink, a pantry, and an adjacent dining area with access to a back deck via sliding doors. The expansive communal yard, meticulously maintained by the condo, offers a perfect spot for outdoor activities and relaxation. Upstairs, you'll find 3 bedrooms, including a spacious primary with large bay windows and a 4-piece en-suite bath. The finished basement introduces a versatile flex space, ideal for a home office, gym, or a dream mudroom, with convenient garage access. Nestled in the family-friendly community of Belle Rive and located across the street from a charming playground and basketball courts, this home offers the ideal blend of convenience and leisure.

Built in 2000

Essential Information

MLS® #	E4448184
Price	\$310,000
Bedrooms	3



Bathrooms	2.50
Full Baths	2
Half Baths	1
Square Footage	1,477
Acres	0.00
Year Built	2000
Type	Condo / Townhouse
Sub-Type	Townhouse
Style	2 Storey
Status	Active

Community Information

Address	8329 160 Avenue
Area	Edmonton
Subdivision	Belle Rive
City	Edmonton
County	ALBERTA
Province	AB
Postal Code	T5Z 3G9

Amenities

Amenities	Deck, Hot Water Natural Gas
Parking	Double Garage Attached

Interior

Interior Features	ensuite bathroom
Appliances	Dishwasher-Built-In, Garage Control, Garage Opener, Hood Fan, Refrigerator, Stove-Electric, Window Coverings
Heating	Forced Air-1, Natural Gas
Stories	3
Has Basement	Yes
Basement	Partial, Finished

Exterior

Exterior	Wood, Vinyl
Exterior Features	Low Maintenance Landscape
Roof	Asphalt Shingles
Construction	Wood, Vinyl
Foundation	Concrete Perimeter

Additional Information

Date Listed	July 17th, 2025
Days on Market	12
Zoning	Zone 28
Condo Fee	\$252

DATA IS DEEMED RELIABLE BUT IS NOT GUARANTEED ACCURATE BY THE REALTORS® ASSOCIATION OF EDMONTON. COPYRIGHT 2025 BY THE REALTORS® ASSOCIATION OF EDMONTON. ALL RIGHTS RESERVED. Trademarks are owned or controlled by the Canadian Real Estate Association (CREA) and identify real estate professionals who are members of CREA (REALTOR®, REALTORS®) and/or the quality of services they provide (MLS®, Multiple Listing Service®)

Listing information last updated on July 28th, 2025 at 11:17pm MDT