

\$525,000 - 14011 95 Street, Edmonton

MLS® #E4447682

\$525,000

4 Bedroom, 3.00 Bathroom, 1,055 sqft
Single Family on 0.00 Acres

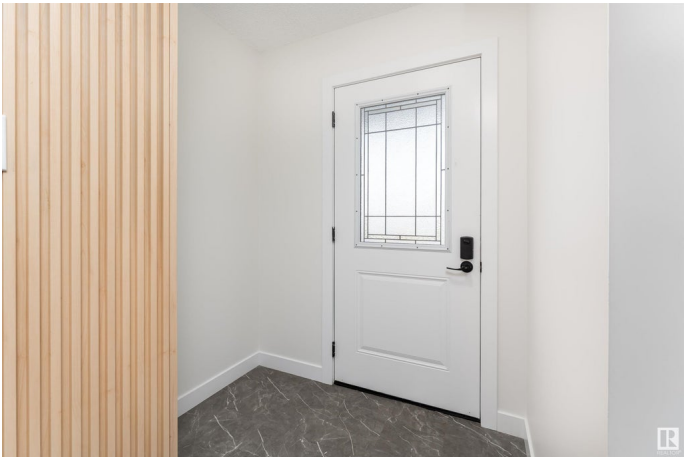
Northmount (Edmonton), Edmonton, AB

Welcome home to this beautifully renovated, pristine, custom-quality bungalow, updated from top to bottom! Featuring 3+1 bedrooms and 3 full bathrooms, this home offers a bright, open-concept main floor with modern finishes throughout. The fully finished basement includes a Separate Entrance and a Second kitchen, ideal for in-law living. Enjoy peace of mind with all the major upgrades completed: new roof, furnace, windows, electrical, hot water heater, central A/C & granite countertops in kitchens & Bathrooms. The spacious primary bedroom boasts a private 3-piece ensuite. Step outside to a huge, fully fenced yard—perfect for entertaining or relaxing with oversized double car Heated garage. Located on a quiet, family-friendly street close to schools, shopping, and all amenities!

Built in 1971

Essential Information

MLS® #	E4447682
Price	\$525,000
Bedrooms	4
Bathrooms	3.00
Full Baths	3
Square Footage	1,055
Acres	0.00



Year Built	1971
Type	Single Family
Sub-Type	Detached Single Family
Style	Bungalow
Status	Active

Community Information

Address	14011 95 Street
Area	Edmonton
Subdivision	Northmount (Edmonton)
City	Edmonton
County	ALBERTA
Province	AB
Postal Code	T5E 3Y6

Amenities

Amenities	On Street Parking, Air Conditioner, Hot Water Natural Gas, No Animal Home, No Smoking Home, R.V. Storage, Vinyl Windows
Parking	Double Garage Detached, Parking Pad Cement/Paved, Rear Drive Access, RV Parking

Interior

Interior Features	ensuite bathroom
Appliances	Air Conditioning-Central, Dishwasher-Built-In, Garage Opener, Microwave Hood Fan, Stacked Washer/Dryer, Window Coverings, Refrigerators-Two, Stoves-Two
Heating	Forced Air-1, Natural Gas
Stories	2
Has Basement	Yes
Basement	Full, Finished

Exterior

Exterior	Wood, Vinyl
Exterior Features	Back Lane, Fenced, Low Maintenance Landscape, Private Setting, Public Transportation, Schools, Shopping Nearby
Roof	Asphalt Shingles
Construction	Wood, Vinyl
Foundation	Concrete Perimeter

School Information

Elementary	Northmount, St Anne
Middle	Dr. Donald, St. Cecilia
High	Archbishop O'leary

Additional Information

Date Listed	July 14th, 2025
Days on Market	13
Zoning	Zone 02

DATA IS DEEMED RELIABLE BUT IS NOT GUARANTEED ACCURATE BY THE REALTORS® ASSOCIATION OF EDMONTON. COPYRIGHT 2025 BY THE REALTORS® ASSOCIATION OF EDMONTON. ALL RIGHTS RESERVED.Trademarks are owned or controlled by the Canadian Real Estate Association (CREA) and identify real estate professionals who are members of CREA (REALTOR®, REALTORS®) and/or the quality of services they provide (MLS®, Multiple Listing Service®)

Listing information last updated on July 27th, 2025 at 4:32am MDT