

\$445,000 - 5316 129 Avenue, Edmonton

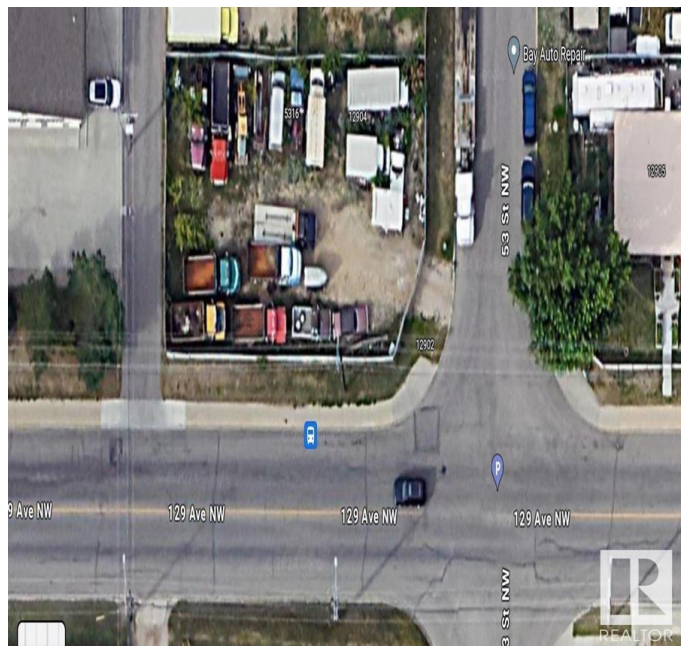
MLS® #E4445283

\$445,000

0 Bedroom, 0.00 Bathroom,
Land Commercial on 0.00 Acres

Kennedale Industrial, Edmonton, AB

Corner lot location, "2" lots side by side. There are many options for use from multifamily with shops, retail, stores, restaurants, pub, cafe, business offices, commercial buildings, trucking, storage yard, etc. with City of Edmonton zoning approval. Present zoning "BE". Access to traffic in any direction with the new "Fort Road" for commuting and the LRT Station. This property is located to take advantage of all transportation corridor; close to 50 Street, Yellowhead Hwy and Hwy 16 or 137 Avenue; Manning Drive and Hwy 15



Essential Information

MLS® #	E4445283
Price	\$445,000
Bathrooms	0.00
Acres	0.00
Type	Land Commercial
Status	Active

Community Information

Address	5316 129 Avenue
Area	Edmonton
Subdivision	Kennedale Industrial
City	Edmonton
County	ALBERTA
Province	AB

Postal Code T5A 0A3

Additional Information

Date Listed July 1st, 2025

Days on Market 71

Zoning Zone 06

DATA IS DEEMED RELIABLE BUT IS NOT GUARANTEED ACCURATE BY THE REALTORS® ASSOCIATION OF EDMONTON. COPYRIGHT 2025 BY THE REALTORS® ASSOCIATION OF EDMONTON. ALL RIGHTS RESERVED.Trademarks are owned or controlled by the Canadian Real Estate Association (CREA) and identify real estate professionals who are members of CREA (REALTOR®, REALTORS®) and/or the quality of services they provide (MLS®, Multiple Listing Service®)

Listing information last updated on September 10th, 2025 at 3:17am MDT