

\$671,895 - 7207 182 Avenue, Edmonton

MLS® #E4445173

\$671,895

4 Bedroom, 3.00 Bathroom, 2,554 sqft
Single Family on 0.00 Acres

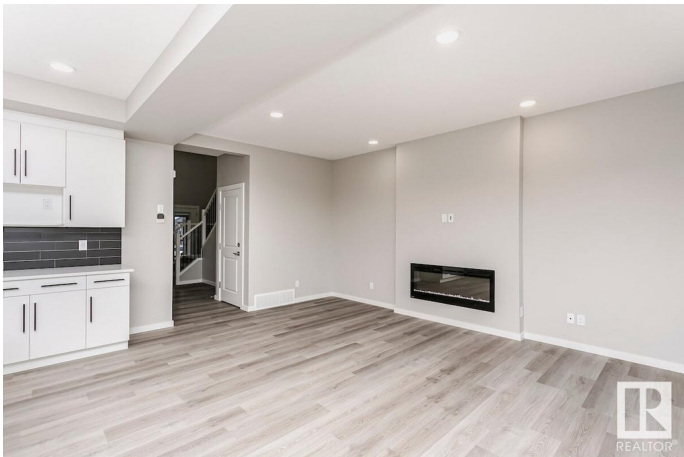
Crystallina Nera East, Edmonton, AB

4 Bedrooms, 3 Full Bathrooms: Spacious layout, including a main floor bedroom with a full bath, perfect for guests. Front Attached Double Car Garage: Provides convenient parking and additional storage space. Backs Onto Future Park and School: Ideal for families, with easy access to green spaces and a future school. Open Concept Main Floor: Large kitchen, dining, and great room area for modern family living. Large Kitchen Island: Ideal for meal prep, serving, and entertaining. Walkthrough mudroom and pantry: Convenient access from the garage to the kitchen, perfect for unloading groceries. 9' Basement Foundation Walls: Ready for potential future development Separate entrance to the basement 50" Linear Ortech LED Electric Fireplace: Adds a modern and cozy touch to the living room.

Built in 2024

Essential Information

MLS® #	E4445173
Price	\$671,895
Bedrooms	4
Bathrooms	3.00
Full Baths	3
Square Footage	2,554
Acres	0.00



Year Built	2024
Type	Single Family
Sub-Type	Detached Single Family
Style	2 Storey
Status	Active

Community Information

Address	7207 182 Avenue
Area	Edmonton
Subdivision	Crystallina Nera East
City	Edmonton
County	ALBERTA
Province	AB
Postal Code	T5Z 0J1

Amenities

Amenities	Ceiling 9 ft., Closet Organizers, Storage-In-Suite, See Remarks
Parking Spaces	4
Parking	Double Garage Attached

Interior

Interior Features	ensuite bathroom
Appliances	None
Heating	Forced Air-1, Natural Gas
Fireplace	Yes
Fireplaces	Insert
Stories	2
Has Basement	Yes
Basement	Full, Unfinished

Exterior

Exterior	Wood, Stone, Vinyl, Hardie Board Siding
Exterior Features	Backs Onto Park/Trees, Park/Reserve, Playground Nearby, Schools
Roof	Asphalt Shingles
Construction	Wood, Stone, Vinyl, Hardie Board Siding
Foundation	Concrete Perimeter

Additional Information

Date Listed	July 1st, 2025
-------------	----------------

Days on Market 26

Zoning Zone 28

DATA IS DEEMED RELIABLE BUT IS NOT GUARANTEED ACCURATE BY THE REALTORS® ASSOCIATION OF EDMONTON. COPYRIGHT 2025 BY THE REALTORS® ASSOCIATION OF EDMONTON. ALL RIGHTS RESERVED. Trademarks are owned or controlled by the Canadian Real Estate Association (CREA) and identify real estate professionals who are members of CREA (REALTOR®, REALTORS®) and/or the quality of services they provide (MLS®, Multiple Listing Service®)

Listing information last updated on July 27th, 2025 at 4:32am MDT