

\$189,900 - 409 320 Ambleside Link, Edmonton

MLS® #E4441295

\$189,900

1 Bedroom, 1.00 Bathroom, 603 sqft

Condo / Townhouse on 0.00 Acres

Ambleside, Edmonton, AB

Upscale penthouse condominium unit with soaring ceilings, high-end finishings, underground parking & a perfect location that's within a few minutes to shopping, trendy restaurants, cafes, movie theatre, parks, lakes, walking trails & more. This immaculate unit features a contemporary floor plan with an abundance of window space that invites natural sunlight in. It has hardwood & tile flooring in the living areas, a peninsula-style kitchen with quartz countertops, attractive backsplash, breakfast counter & stainless steel appliances. There's also in-suite laundry, a dream walk-in closet off the bedroom, computer nook, modern bathroom, living room & spacious balcony. L'Attitude Studios is a well managed & meticulously maintained condominium complex that has a well-equipped, modern gym, social room & a guest suite available for owners. Easy access to Anthony Henday Drive & the international airport.

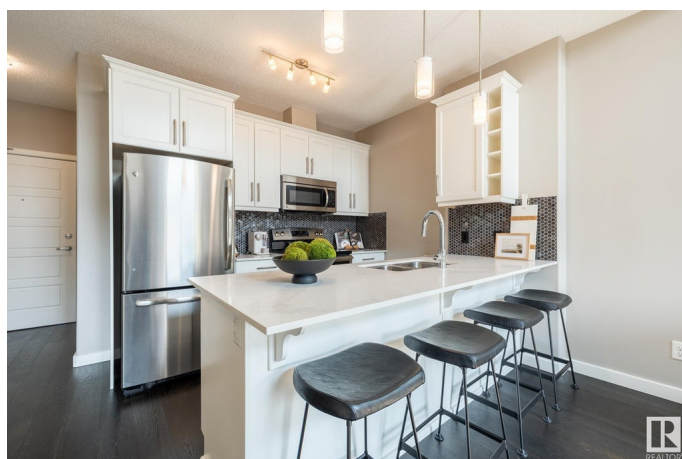
Built in 2014

Essential Information

MLS® # E4441295

Price \$189,900

Bedrooms 1



Bathrooms	1.00
Full Baths	1
Square Footage	603
Acres	0.00
Year Built	2014
Type	Condo / Townhouse
Sub-Type	Lowrise Apartment
Style	Single Level Apartment
Status	Active

Community Information

Address	409 320 Ambleside Link
Area	Edmonton
Subdivision	Ambleside
City	Edmonton
County	ALBERTA
Province	AB
Postal Code	T6W 2Z9

Amenities

Amenities	Exercise Room, Guest Suite, Parking-Visitor, Recreation Room/Centre, Secured Parking, Security Door
Parking	Heated, Stall, Underground, See Remarks

Interior

Appliances	Dishwasher-Built-In, Dryer, Microwave Hood Fan, Refrigerator, Stove-Electric, Washer, Window Coverings
Heating	Baseboard, Natural Gas
# of Stories	4
Stories	1
Has Basement	Yes
Basement	None, No Basement

Exterior

Exterior	Wood, Brick, Stucco
Exterior Features	Golf Nearby, Landscaped, Picnic Area, Playground Nearby, Public Transportation, Schools, Shopping Nearby, Treed Lot
Roof	Asphalt Shingles
Construction	Wood, Brick, Stucco

Foundation

Concrete Perimeter

Additional Information

Date Listed

June 7th, 2025

Days on Market

5

Zoning

Zone 56

HOA Fees

100

HOA Fees Freq.

Annually

Condo Fee

\$352

DATA IS DEEMED RELIABLE BUT IS NOT GUARANTEED ACCURATE BY THE REALTORS® ASSOCIATION OF EDMONTON. COPYRIGHT 2025 BY THE REALTORS® ASSOCIATION OF EDMONTON. ALL RIGHTS RESERVED.Trademarks are owned or controlled by the Canadian Real Estate Association (CREA) and identify real estate professionals who are members of CREA (REALTOR®, REALTORS®) and/or the quality of services they provide (MLS®, Multiple Listing Service®)

Listing information last updated on June 12th, 2025 at 4:17am MDT