

# \$599,900 - 6377 King Wynd, Edmonton

MLS® #E4440705

**\$599,900**

6 Bedroom, 3.50 Bathroom, 1,597 sqft  
Single Family on 0.00 Acres

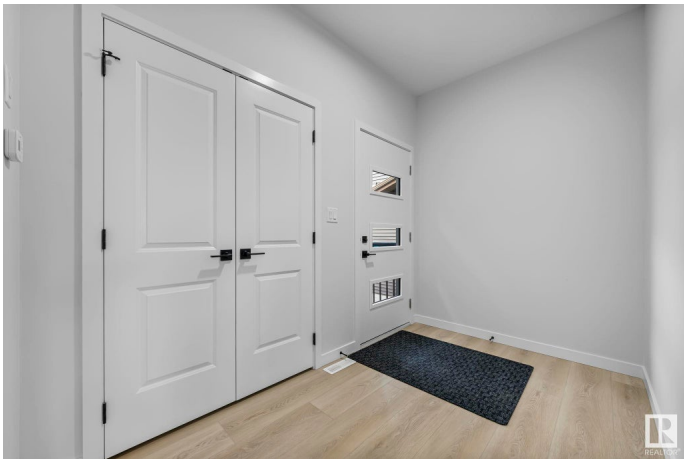
Keswick Area, Edmonton, AB

Discover this brand new duplex by Art Homes in the sought-after Arbours of Keswick! Featuring 4 spacious bedrooms upstairs, 2.5 baths, and a double garage, this home blends style with functionality. Enjoy 9 ft ceilings on all levels, including the basement, and premium upgrades throughout. The standout feature? A fully legal 2-bedroom basement suite – ideal for rental income or extended family living. Located steps from schools, walking trails, and a scenic pond. Eligible buyers can take advantage of the New Canadian GST Rebate Program on new homes! Rare opportunity to own new and save. This home combines quality craftsmanship with unbeatable value in a family-friendly community. Move in ready waiting for you.

Built in 2025

## Essential Information

MLS® #	E4440705
Price	\$599,900
Bedrooms	6
Bathrooms	3.50
Full Baths	3
Half Baths	1
Square Footage	1,597
Acres	0.00



Year Built	2025
Type	Single Family
Sub-Type	Half Duplex
Style	2 Storey
Status	Active

### Community Information

Address	6377 King Wynd
Area	Edmonton
Subdivision	Keswick Area
City	Edmonton
County	ALBERTA
Province	AB
Postal Code	T6W 5J3

### Amenities

Amenities	Ceiling 9 ft., Detectors Smoke, Hot Water Tankless, 9 ft. Basement Ceiling
Parking	Double Garage Attached

### Interior

Interior Features	ensuite bathroom
Appliances	Builder Appliance Credit
Heating	Forced Air-2, Natural Gas
Fireplace	Yes
Fireplaces	Heatilator/Fan
Stories	3
Has Suite	Yes
Has Basement	Yes
Basement	Full, Finished

### Exterior

Exterior	Wood, Vinyl
Exterior Features	Back Lane, Golf Nearby, Playground Nearby, Schools, Shopping Nearby, Stream/Pond
Roof	Asphalt Shingles
Construction	Wood, Vinyl
Foundation	Concrete Perimeter

### School Information

Elementary	Joey Moss School
Middle	Joey Moss School
High	Harry Ainlay School

**Additional Information**

Date Listed	June 5th, 2025
Days on Market	7
Zoning	Zone 56

DATA IS DEEMED RELIABLE BUT IS NOT GUARANTEED ACCURATE BY THE REALTORS® ASSOCIATION OF EDMONTON. COPYRIGHT 2025 BY THE REALTORS® ASSOCIATION OF EDMONTON. ALL RIGHTS RESERVED.Trademarks are owned or controlled by the Canadian Real Estate Association (CREA) and identify real estate professionals who are members of CREA (REALTOR®, REALTORS®) and/or the quality of services they provide (MLS®, Multiple Listing Service®)

Listing information last updated on June 13th, 2025 at 5:17am MDT