

\$0 - 1201 76 Avenue, Edmonton

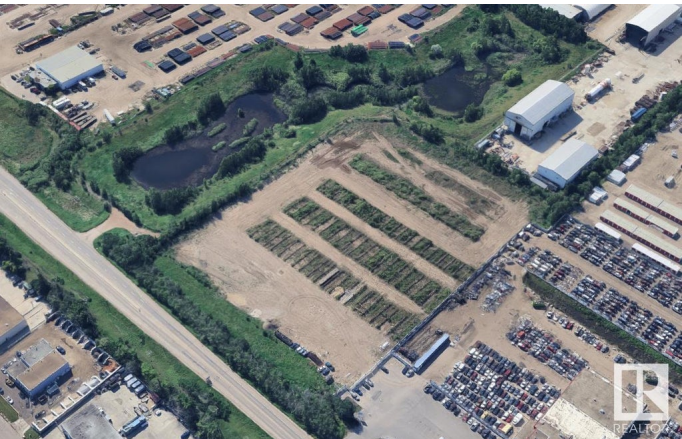
MLS® #E4440554

\$0

0 Bedroom, 0.00 Bathroom,
Land Commercial on 0.00 Acres

Southeast Industrial (Edmonton), Edmonton,
AB

8 acres± of industrial yard available for lease
at 1201 76 Avenue in Edmonton. The site
is fully fenced, well compacted, and zoned IM.
The location offers access to 17th Street with
proximity to Sherwood Park Freeway,
Whitemud Drive, and Anthony Henday Drive.



Built in 1974

Essential Information

| | |
|------------|-----------------|
| MLS® # | E4440554 |
| Bathrooms | 0.00 |
| Acres | 0.00 |
| Year Built | 1974 |
| Type | Land Commercial |
| Status | Active |

Community Information

| | |
|-------------|------------------------------|
| Address | 1201 76 Avenue |
| Area | Edmonton |
| Subdivision | Southeast Industrial (Edmont |
| City | Edmonton |
| County | ALBERTA |
| Province | AB |
| Postal Code | T6P 1P2 |

Additional Information

| | |
|-------------|----------------|
| Date Listed | June 5th, 2025 |
|-------------|----------------|

Days on Market 51

Zoning Zone 42

DATA IS DEEMED RELIABLE BUT IS NOT GUARANTEED ACCURATE BY THE REALTORS® ASSOCIATION OF EDMONTON. COPYRIGHT 2025 BY THE REALTORS® ASSOCIATION OF EDMONTON. ALL RIGHTS RESERVED. Trademarks are owned or controlled by the Canadian Real Estate Association (CREA) and identify real estate professionals who are members of CREA (REALTOR®, REALTORS®) and/or the quality of services they provide (MLS®, Multiple Listing Service®)

Listing information last updated on July 26th, 2025 at 3:17pm MDT