

## \$210,000 - 5430 Highway 16, Rural Parkland County

MLS® #E4440453

**\$210,000**

1 Bedroom, 0.50 Bathroom, 576 sqft

Rural on 8.52 Acres

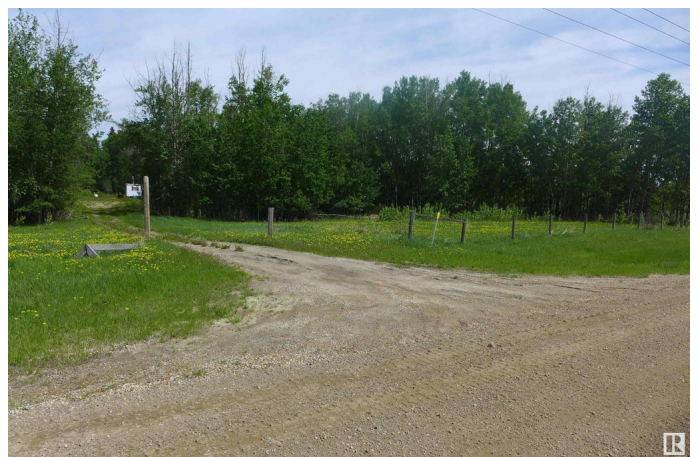
None, Rural Parkland County, AB

THIS SUPERB TREED 8.52 ACRES FRONTS HWY 16 AND 45 MINUTES FROM EDMONTON AND A FEW MINUTES FROM FOUR BOATING/FISHING LAKES. Nicely treed acreage out of a sub-division with a cleared yard site with graveled road & parking area. An ideal location to run your business from or to build your dream home with privacy or a weekend get-a-way. The mobile would need your handyman skills to make it your now home. There is power; septic tank & field & drilled well. Zoned Agricultural General District. The converted bus/RV is negotiable. Check this property out.

Built in 1971

### Essential Information

MLS® #	E4440453
Price	\$210,000
Bedrooms	1
Bathrooms	0.50
Half Baths	1
Square Footage	576
Acres	8.52
Year Built	1971
Type	Rural
Sub-Type	Detached Single Family
Style	Bungalow



Status                      Active

**Community Information**

Address                      5430 Hghway 16  
Area                            Rural Parkland County  
Subdivision                  None  
City                            Rural Parkland County  
County                        ALBERTA  
Province                      AB  
Postal Code                  T0E 0W0

**Amenities**

Features                      Fire Pit

**Interior**

Heating                      Forced Air-1, Wood Stove, Propane, Wood  
Stories                        1  
Has Basement                Yes  
Basement                      None, No Basement

**Exterior**

Exterior Features          Golf Nearby, Private Setting, Recreation Use, Schools, Shopping  
Nearby, Treed Lot  
Foundation                  Block

**Additional Information**

Date Listed                  June 4th, 2025  
Days on Market              52  
Zoning                        Zone 70

DATA IS DEEMED RELIABLE BUT IS NOT GUARANTEED ACCURATE BY THE REALTORS® ASSOCIATION OF EDMONTON. COPYRIGHT 2025 BY THE REALTORS® ASSOCIATION OF EDMONTON. ALL RIGHTS RESERVED.Trademarks are owned or controlled by the Canadian Real Estate Association (CREA) and identify real estate professionals who are members of CREA (REALTOR®, REALTORS®) and/or the quality of services they provide (MLS®, Multiple Listing Service®)  
Listing information last updated on July 26th, 2025 at 2:18pm MDT