

\$724,999 - 4725 105b Street, Edmonton

MLS® #E4440353

\$724,999

3 Bedroom, 2.50 Bathroom, 1,819 sqft
Single Family on 0.00 Acres

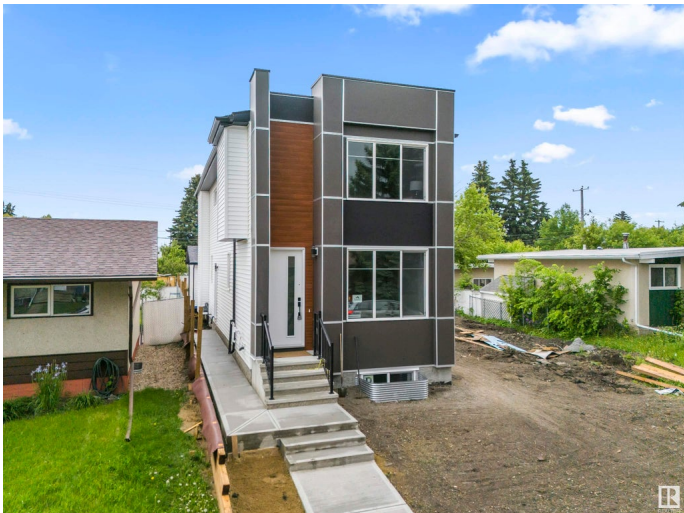
Empire Park, Edmonton, AB

This home showcases quality craftsmanship, attention to detail! Step into the Great Room providing tons of natural light, this home features 9â€™™ ceilings, vinyl plank flooring, stunning fixtures, and a breathtaking stone-tiled electric fireplace. The open-concept layout leads to a spacious dining area highlighted by a feature wall. The modern island kitchen impresses with rich cabinetry, quartz countertops, and high-end stainless steel appliances. The mudroom features built-in cabinetry, benches as well as stylish barn door and access to the composite deck and backyard. Up the elegant glass and wood staircase, you'll find two bedrooms with a Jack & Jill bathroom, upper floor laundry, and a serene primary suite with a walk-in closet and beautiful ensuite. Outside features a double detached garage, and a separate entrance to the basement, offering future development. This is the complete packageâ€™”modern, functional, and move in ready!

Built in 2024

Essential Information

MLS® #	E4440353
Price	\$724,999
Bedrooms	3
Bathrooms	2.50



Full Baths	2
Half Baths	1
Square Footage	1,819
Acres	0.00
Year Built	2024
Type	Single Family
Sub-Type	Detached Single Family
Style	2 Storey
Status	Active

Community Information

Address	4725 105b Street
Area	Edmonton
Subdivision	Empire Park
City	Edmonton
County	ALBERTA
Province	AB
Postal Code	T6H 2R7

Amenities

Amenities	See Remarks
Parking	Double Garage Detached

Interior

Interior Features	ensuite bathroom
Appliances	Dishwasher-Built-In, Dryer, Garage Control, Garage Opener, Hood Fan, Oven-Microwave, Refrigerator, Stove-Countertop Electric, Washer
Heating	Forced Air-1, Natural Gas
Fireplace	Yes
Fireplaces	Mantel
Stories	2
Has Basement	Yes
Basement	Full, Unfinished

Exterior

Exterior	Wood, Metal, Vinyl, Hardie Board Siding
Exterior Features	Park/Reserve, Schools, Shopping Nearby
Roof	Asphalt Shingles
Construction	Wood, Metal, Vinyl, Hardie Board Siding

Foundation Concrete Perimeter

School Information

Elementary Mckee School
Middle Allendale School
High Harry Ainlay School

Additional Information

Date Listed June 4th, 2025
Days on Market 5
Zoning Zone 15

DATA IS DEEMED RELIABLE BUT IS NOT GUARANTEED ACCURATE BY THE REALTORS® ASSOCIATION OF EDMONTON. COPYRIGHT 2025 BY THE REALTORS® ASSOCIATION OF EDMONTON. ALL RIGHTS RESERVED.Trademarks are owned or controlled by the Canadian Real Estate Association (CREA) and identify real estate professionals who are members of CREA (REALTOR®, REALTORS®) and/or the quality of services they provide (MLS®, Multiple Listing Service®)
Listing information last updated on June 9th, 2025 at 6:17pm MDT