

\$579,900 - 19, 57104 Hwy 38, Waterdale Park, Rural Sturgeon County

MLS® #E4439722

\$579,900

4 Bedroom, 2.00 Bathroom, 1,262 sqft

Rural on 3.04 Acres

Waterdale Park, Rural Sturgeon County, AB

BEAUTIFUL REDWATER ACREAGE!

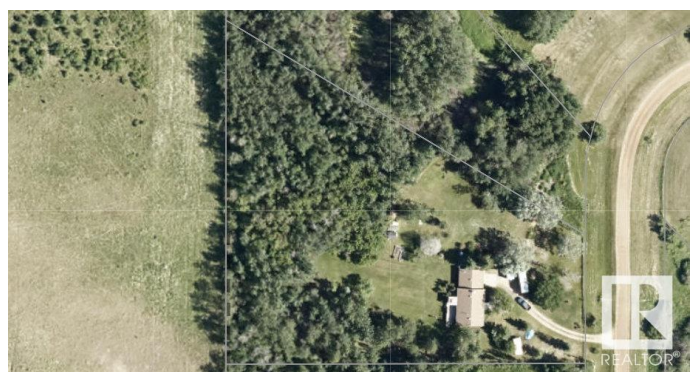
Welcome to #19 Ivan Road, here in Waterdale Park just outside Redwater! This well maintained home sits on 3 fenced & gated beautiful acres, with a large back deck, open grassy yard surrounded by trees, raised flower /veg gardens, 3 garden sheds and wood gazebo. As you enter this cozy home, the living room has a beautiful stone (wood) fireplace to cozy up around. Open concept dining rm /kitchen counters are granite, patio doors opening onto the back deck & yard. 2 bdrms and a 4pc bathrm w/ luxury steam shower. Basement has a separate entrance w/a full kitchen and 2 more bdrms. 2nd living room has a stone (gas) fireplace. Attached double heated garage for parking, carport & room to store RV and more. The yard is beautiful, quiet & private, and often you can see wildlife! Nearby Redwater offers: jobs, k-12 school, arena, pool, golf, shopping, restaurants, hospital & more! on the school bus route! GREAT PROPERTY!! DON'T MISS OUT!

Built in 1992

Essential Information

MLS® #

E4439722



Price	\$579,900
Bedrooms	4
Bathrooms	2.00
Full Baths	2
Square Footage	1,262
Acres	3.04
Year Built	1992
Type	Rural
Sub-Type	Detached Single Family
Style	Bungalow
Status	Active

Community Information

Address	19, 57104 Hwy 38, Waterdale Park
Area	Rural Sturgeon County
Subdivision	Waterdale Park
City	Rural Sturgeon County
County	ALBERTA
Province	AB
Postal Code	T0A 2W0

Amenities

Features	Deck, Fire Pit, Gazebo, Greenhouse, Parking-Extra, Parking-Plug-Ins, R.V. Storage, Vinyl Windows
----------	--

Interior

Heating	Forced Air-1, Natural Gas
Fireplace	Yes
Stories	2
Has Basement	Yes
Basement	Full, Finished

Exterior

Exterior	Wood
Exterior Features	Backs Onto Park/Trees, Environmental Reserve, Fenced, Golf Nearby, Landscaped, Private Setting, Schools, Shopping Nearby, Treed Lot, Vegetable Garden
Construction	Wood
Foundation	Concrete Perimeter

Additional Information

Date Listed May 31st, 2025
Days on Market 9
Zoning Zone 60

DATA IS DEEMED RELIABLE BUT IS NOT GUARANTEED ACCURATE BY THE REALTORS® ASSOCIATION OF EDMONTON. COPYRIGHT 2025 BY THE REALTORS® ASSOCIATION OF EDMONTON. ALL RIGHTS RESERVED.Trademarks are owned or controlled by the Canadian Real Estate Association (CREA) and identify real estate professionals who are members of CREA (REALTOR®, REALTORS®) and/or the quality of services they provide (MLS®, Multiple Listing Service®)
Listing information last updated on June 9th, 2025 at 7:02pm MDT