

\$569,900 - 1408 Latta Court, Edmonton

MLS® #E4438071

\$569,900

4 Bedroom, 3.50 Bathroom, 1,908 sqft

Single Family on 0.00 Acres

Leger, Edmonton, AB

Welcome to this beautifully maintained home tucked away in a QUIET TERWILLEGAR CUL-DE-SAC offering the perfect blend of comfort, style, and convenience. The open-concept main floor features a spacious kitchen with GRANITE COUNTERTOPS, LARGE ISLAND, and RAISED EATING BAR ideal for both everyday living and entertaining. Thoughtful details include a GAS FIREPLACE, BUILT-IN SHELVEING, CUSTOM IRON RAILING, SOUND SYSTEM, and a second kitchen in the FULLY FINISHED BASEMENT. The lower level also includes an EXTRA BEDROOM and LARGE REC ROOM. Step outside to a PRIVATE BACKYARD OASIS with MATURE TREES, ROCK GARDEN, FIRE PIT, and an EXPANSIVE DECK. The DOUBLE GARAGE is INSULATED and DRYWALLED. Just a short walk to SCHOOLS, TERWILLEGAR REC CENTRE, TRANSIT, SHOPS, and RESTAURANTS this home is the TOTAL PACKAGE.

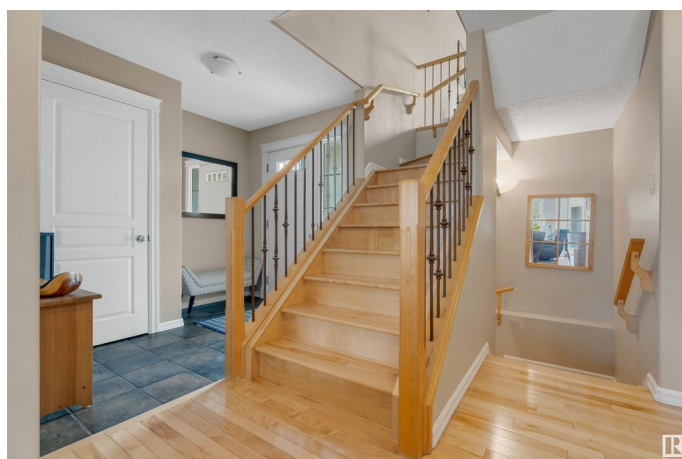
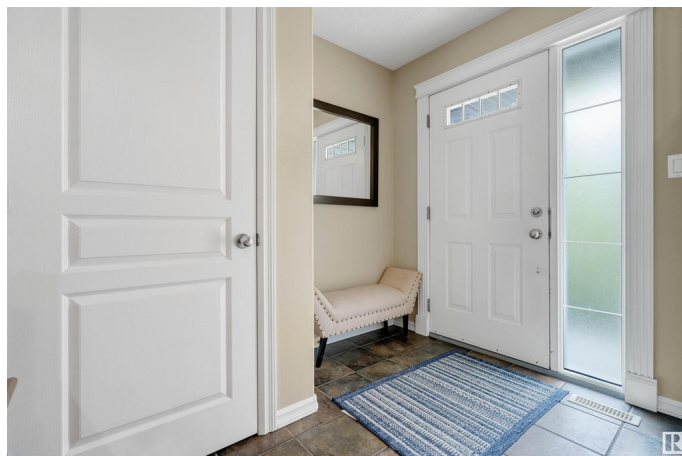
Built in 2004

Essential Information

MLS® # E4438071

Price \$569,900

Bedrooms 4



Bathrooms	3.50
Full Baths	3
Half Baths	1
Square Footage	1,908
Acres	0.00
Year Built	2004
Type	Single Family
Sub-Type	Detached Single Family
Style	2 Storey
Status	Active

Community Information

Address	1408 Latta Court
Area	Edmonton
Subdivision	Leger
City	Edmonton
County	ALBERTA
Province	AB
Postal Code	T6R 3N2

Amenities

Amenities	See Remarks
Parking	Double Garage Attached

Interior

Interior Features	ensuite bathroom
Appliances	Dishwasher-Built-In, Garage Control, Garage Opener, Microwave Hood Fan, Storage Shed, Stove-Gas, Window Coverings, Refrigerators-Two
Heating	Forced Air-1, Natural Gas
Fireplace	Yes
Fireplaces	Mantel
Stories	3
Has Suite	Yes
Has Basement	Yes
Basement	Full, Finished

Exterior

Exterior	Wood, Vinyl
Exterior Features	Fenced, Landscaped, Schools, Shopping Nearby

Roof	Asphalt Shingles
Construction	Wood, Vinyl
Foundation	Concrete Perimeter

Additional Information

Date Listed	May 23rd, 2025
Days on Market	22
Zoning	Zone 14

DATA IS DEEMED RELIABLE BUT IS NOT GUARANTEED ACCURATE BY THE REALTORS® ASSOCIATION OF EDMONTON. COPYRIGHT 2025 BY THE REALTORS® ASSOCIATION OF EDMONTON. ALL RIGHTS RESERVED.Trademarks are owned or controlled by the Canadian Real Estate Association (CREA) and identify real estate professionals who are members of CREA (REALTOR®, REALTORS®) and/or the quality of services they provide (MLS®, Multiple Listing Service®)

Listing information last updated on June 14th, 2025 at 11:32am MDT