

\$335,000 - 106 10540 56 Avenue, Edmonton

MLS® #E4437767

\$335,000

3 Bedroom, 2.50 Bathroom, 1,618 sqft
Condo / Townhouse on 0.00 Acres

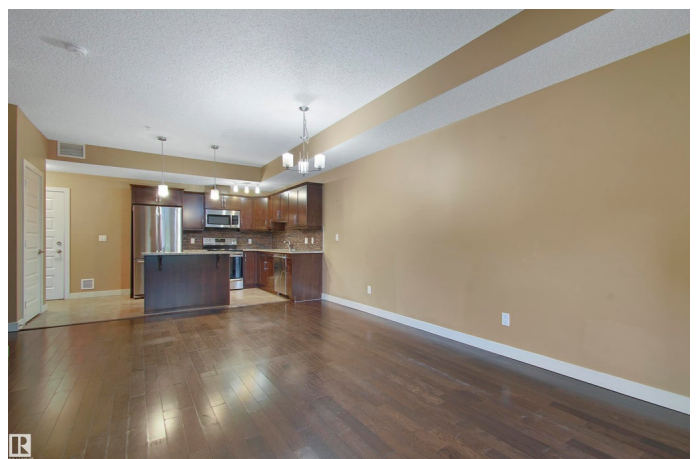
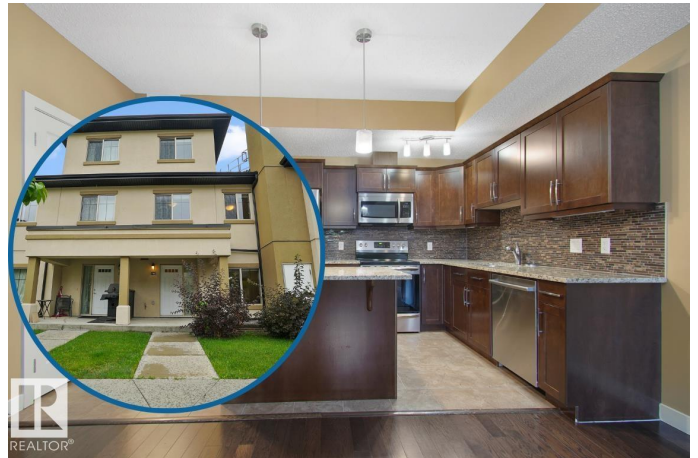
Pleasantview (Edmonton), Edmonton, AB

This well-maintained 3-storey townhome includes utilities in the condo fees leaving you with only an electrical bill. Visit the REALTOR®'s website for more details. Modern low maintenance lifestyle in Pleasantview, a mature neighbourhood with treelined streets! The open-concept main floor features a bright living area, upgraded kitchen with modern finishes, & a cozy dining space. There's even a BBQ hook-up outside. The second floor is for bedrooms & the main bathroom which means the 3rd floor is a bonus room or second living area. Serenity Gardens is a professionally run condo community with a full parkade. This property comes with two titled parking stalls nearby, one has a storage cage & the other could hold an F150. From here, it's easy to fast-track throughout Edmonton via LRT but with restaurants, Italian Centre, & Southgate Shopping Centre so close there's not much reason to leave. If you're looking for move-in ready option in a south central neighbourhood this home might be your home.

Built in 2010

Essential Information

| | |
|--------|-----------|
| MLS® # | E4437767 |
| Price | \$335,000 |



| | |
|----------------|-------------------|
| Bedrooms | 3 |
| Bathrooms | 2.50 |
| Full Baths | 2 |
| Half Baths | 1 |
| Square Footage | 1,618 |
| Acres | 0.00 |
| Year Built | 2010 |
| Type | Condo / Townhouse |
| Sub-Type | Townhouse |
| Style | 3 Storey |
| Status | Active |

Community Information

| | |
|-------------|-------------------------|
| Address | 106 10540 56 Avenue |
| Area | Edmonton |
| Subdivision | Pleasantview (Edmonton) |
| City | Edmonton |
| County | ALBERTA |
| Province | AB |
| Postal Code | T6H 0X7 |

Amenities

| | |
|----------------|---|
| Amenities | On Street Parking, Air Conditioner, Parking-Extra, Party Room, Natural Gas BBQ Hookup |
| Parking Spaces | 2 |
| Parking | Double Indoor, Heated, Parkade, Underground |

Interior

| | |
|-------------------|---|
| Interior Features | ensuite bathroom |
| Appliances | Air Conditioning-Central, Dishwasher-Built-In, Microwave Hood Fan, Refrigerator, Stacked Washer/Dryer, Stove-Electric |
| Heating | Heat Pump, Natural Gas |
| Stories | 3 |
| Has Basement | Yes |
| Basement | None, No Basement |

Exterior

| | |
|-------------------|--|
| Exterior | Wood, Stucco |
| Exterior Features | Backs Onto Park/Trees, Low Maintenance Landscape, No Through |

| | |
|--------------|--------------------------------|
| | Road, Schools, Shopping Nearby |
| Roof | Asphalt Shingles |
| Construction | Wood, Stucco |
| Foundation | Concrete Perimeter |

School Information

| | |
|------------|---------------------|
| Elementary | McKee School |
| Middle | Allendale School |
| High | Harry Ainlay School |

Additional Information

| | |
|----------------|----------------|
| Date Listed | May 22nd, 2025 |
| Days on Market | 91 |
| Zoning | Zone 15 |
| Condo Fee | \$770 |

DATA IS DEEMED RELIABLE BUT IS NOT GUARANTEED ACCURATE BY THE REALTORS® ASSOCIATION OF EDMONTON. COPYRIGHT 2025 BY THE REALTORS® ASSOCIATION OF EDMONTON. ALL RIGHTS RESERVED. Trademarks are owned or controlled by the Canadian Real Estate Association (CREA) and identify real estate professionals who are members of CREA (REALTOR®, REALTORS®) and/or the quality of services they provide (MLS®, Multiple Listing Service®)

Listing information last updated on August 21st, 2025 at 2:32am MDT