

\$749,900 - 19 St, Rural Leduc County

MLS® #E4437416

\$749,900

4 Bedroom, 3.00 Bathroom, 2,380 sqft
Rural on 0.10 Acres

Irvine Creek, Rural Leduc County, AB

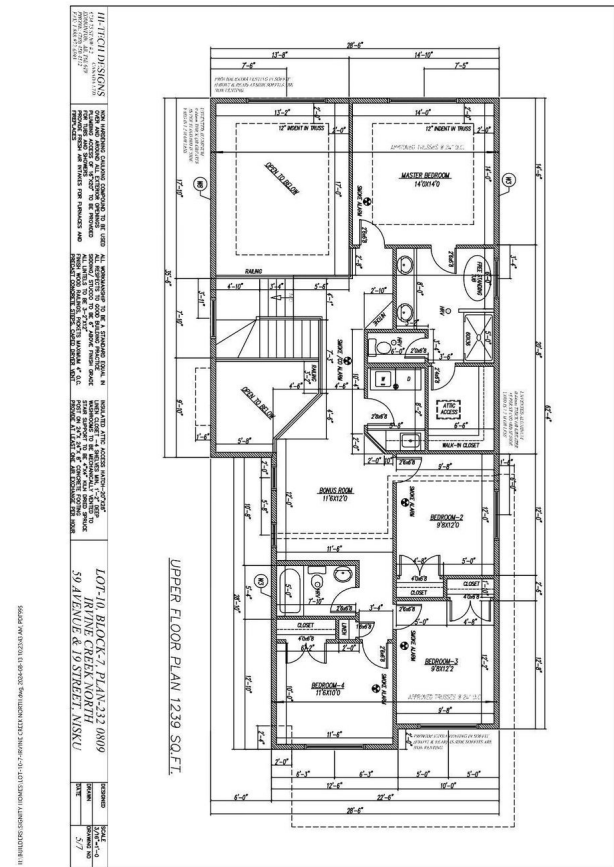
Amazing pre-construction opportunity in Irvine Creek! This beautiful 5-bedroom, 3-bathroom home offers 2,380 sq. ft. of luxury living on a 30â€™™ pocket lot with a rare Oversized Double car garage. Featuring a main floor bedroom and full bath, an open-to-below living area, upgraded kitchen with a spice kitchen, and four spacious bedrooms upstairs â€“ itâ€™™s perfect for large families. Enjoy premium finishes and high-end lighting throughout. Donâ€™™t miss your chance to own in this sought-after community!

Built in 2025

Essential Information

MLS® #	E4437416
Price	\$749,900
Bedrooms	4
Bathrooms	3.00
Full Baths	3
Square Footage	2,380
Acres	0.10
Year Built	2025
Type	Rural
Sub-Type	Detached Single Family
Style	2 Storey
Status	Active

Community Information



Address	19 St
Area	Rural Leduc County
Subdivision	Irvine Creek
City	Rural Leduc County
County	ALBERTA
Province	AB
Postal Code	T4X 3C4

Amenities

Features	See Remarks
----------	-------------

Interior

Interior Features	ensuite bathroom
Heating	Forced Air-1, Natural Gas
Stories	2
Has Basement	Yes
Basement	Full, Unfinished

Exterior

Exterior	Wood
Exterior Features	Airport Nearby, Playground Nearby, See Remarks
Construction	Wood
Foundation	Concrete Perimeter

Additional Information

Date Listed	May 20th, 2025
Days on Market	26
Zoning	Zone 80

DATA IS DEEMED RELIABLE BUT IS NOT GUARANTEED ACCURATE BY THE REALTORS® ASSOCIATION OF EDMONTON. COPYRIGHT 2025 BY THE REALTORS® ASSOCIATION OF EDMONTON. ALL RIGHTS RESERVED. Trademarks are owned or controlled by the Canadian Real Estate Association (CREA) and identify real estate professionals who are members of CREA (REALTOR®, REALTORS®) and/or the quality of services they provide (MLS®, Multiple Listing Service®)

Listing information last updated on June 15th, 2025 at 7:32am MDT