

\$254,900 - 204 10524 77 Avenue, Edmonton

MLS® #E4436305

\$254,900

2 Bedroom, 2.00 Bathroom, 942 sqft

Condo / Townhouse on 0.00 Acres

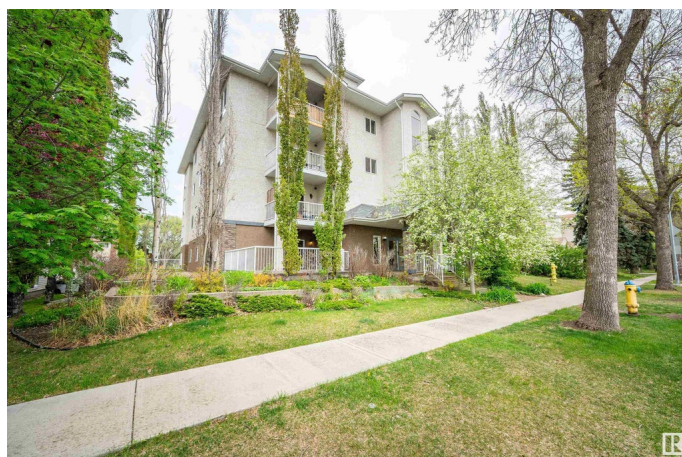
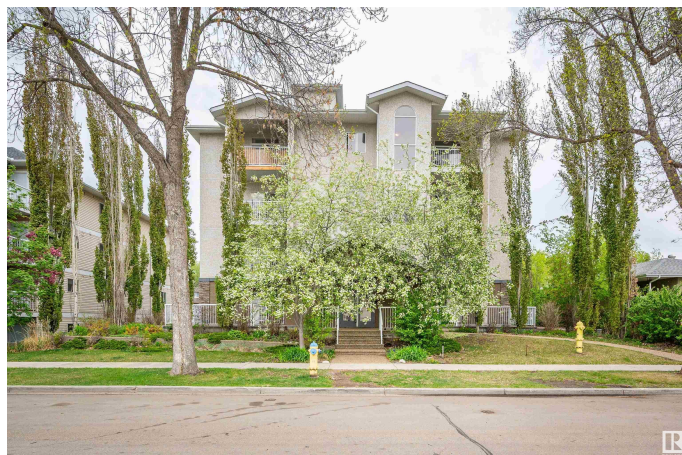
Queen Alexandra, Edmonton, AB

Nestled in the heart of Queen Alexandra, this stylish 2 bedroom 2 bath condo offers the perfect blend of urban convenience and serene living. Located on a tranquil street, you are just steps away from Whyte Ave. The UofA and top rated schools are within walking distance. This corner unit has a welcoming entrance. The Galley style kitchen has stainless appliances, granite counter tops perfect for culinary enthusiasts. The kitchen is open to the spacious and inviting living room with corner fireplace, rich laminate floors and a covered deck/patio. There are 2 good size bedrooms offering ample space and natural light. The primary has a walk through closet and a 4 pc ensuite. An additional 3 pc bath and Laundry area is included. Worried about parking? An underground parking stall is included. Don't miss this opportunity to live in Edmonton's sought after neighborhood. This property is perfect for Students, young families or singles! Welcome home!

Built in 2009

Essential Information

MLS® #	E4436305
Price	\$254,900
Bedrooms	2
Bathrooms	2.00



Full Baths	2
Square Footage	942
Acres	0.00
Year Built	2009
Type	Condo / Townhouse
Sub-Type	Lowrise Apartment
Style	Single Level Apartment
Status	Active

Community Information

Address	204 10524 77 Avenue
Area	Edmonton
Subdivision	Queen Alexandra
City	Edmonton
County	ALBERTA
Province	AB
Postal Code	T6E 1N1

Amenities

Amenities	See Remarks
Parking	Underground

Interior

Interior Features	ensuite bathroom
Appliances	Dishwasher-Built-In, Dryer, Microwave Hood Fan, Refrigerator, Stove-Electric, Washer, Window Coverings
Heating	Hot Water, Water
Fireplace	Yes
Fireplaces	Corner
# of Stories	4
Stories	1
Has Basement	Yes
Basement	None, No Basement

Exterior

Exterior	Wood, Stucco
Exterior Features	Park/Reserve, Schools, Shopping Nearby, See Remarks
Roof	Asphalt Shingles
Construction	Wood, Stucco

Foundation Concrete Perimeter

Additional Information

Date Listed May 14th, 2025
Days on Market 37
Zoning Zone 15
Condo Fee \$752

DATA IS DEEMED RELIABLE BUT IS NOT GUARANTEED ACCURATE BY THE REALTORS® ASSOCIATION OF EDMONTON. COPYRIGHT 2025 BY THE REALTORS® ASSOCIATION OF EDMONTON. ALL RIGHTS RESERVED.Trademarks are owned or controlled by the Canadian Real Estate Association (CREA) and identify real estate professionals who are members of CREA (REALTOR®, REALTORS®) and/or the quality of services they provide (MLS®, Multiple Listing Service®)
Listing information last updated on June 20th, 2025 at 8:47am MDT