

\$849,900 - 6724 Crawford Way, Edmonton

MLS® #E4434370

\$849,900

7 Bedroom, 5.00 Bathroom, 2,970 sqft

Single Family on 0.00 Acres

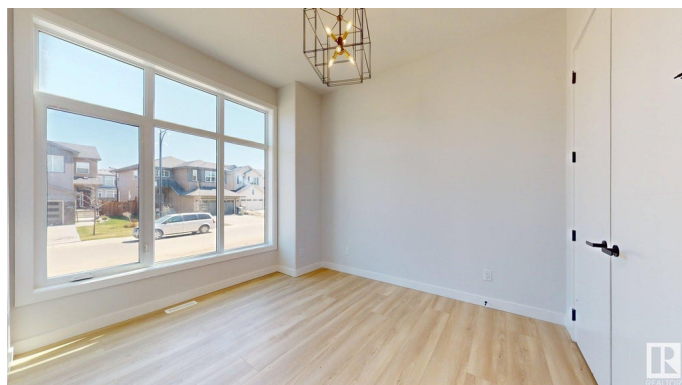
Chappelle Area, Edmonton, AB

Stunning brand new home in Chappelle offering nearly 3,000 sq. ft. above grade plus a fully finished 1,176 sq. ft. basement—ideal for large or multi-generational families! Boasting 7 bedrooms, 5 full baths, and a \$5,500 appliance credit, this home combines space and style. The main floor features an open-concept layout with a spacious living area, modern fireplace, full bedroom, and 3-pc bath. The sleek island kitchen includes quartz countertops, walk-in pantry, mosaic backsplash, and breakfast nook. A dedicated mudroom adds function. Upstairs you'll find 4 bedrooms, including a gorgeous primary suite with a 5-pc ensuite and walk-in closet, plus a bonus room and laundry. The basement offers a second kitchen, 2 bedrooms, and a full bath—perfect for extended family or guests. Located close to parks, schools, and shopping, this home is move-in ready and built for modern family living!

Built in 2024

Essential Information

MLS® #	E4434370
Price	\$849,900
Bedrooms	7
Bathrooms	5.00
Full Baths	5



Square Footage	2,970
Acres	0.00
Year Built	2024
Type	Single Family
Sub-Type	Detached Single Family
Style	2 Storey
Status	Active

Community Information

Address	6724 Crawford Way
Area	Edmonton
Subdivision	Chappelle Area
City	Edmonton
County	ALBERTA
Province	AB
Postal Code	T6W 1A6

Amenities

Amenities	Closet Organizers
Parking Spaces	4
Parking	Double Garage Attached

Interior

Interior Features	ensuite bathroom
Appliances	See Remarks
Heating	Forced Air-1, Forced Air-2, Natural Gas
Fireplace	Yes
Fireplaces	Tile Surround
Stories	3
Has Suite	Yes
Has Basement	Yes
Basement	Full, Finished

Exterior

Exterior	Wood, Stone, Vinyl
Exterior Features	Back Lane, Flat Site, Low Maintenance Landscape, Park/Reserve, Playground Nearby, Schools, Shopping Nearby
Roof	Asphalt Shingles
Construction	Wood, Stone, Vinyl

Foundation Concrete Perimeter

School Information

Elementary Donald R.GETTY School
Middle Donald R.GETTY School
High DR.ANNE ANDERSON SCHOOL

Additional Information

Date Listed May 3rd, 2025
Days on Market 40
Zoning Zone 55

DATA IS DEEMED RELIABLE BUT IS NOT GUARANTEED ACCURATE BY THE REALTORS® ASSOCIATION OF EDMONTON. COPYRIGHT 2025 BY THE REALTORS® ASSOCIATION OF EDMONTON. ALL RIGHTS RESERVED.Trademarks are owned or controlled by the Canadian Real Estate Association (CREA) and identify real estate professionals who are members of CREA (REALTOR®, REALTORS®) and/or the quality of services they provide (MLS®, Multiple Listing Service®)
Listing information last updated on June 13th, 2025 at 2:02am MDT