

## \$635,000 - 3938 Cherrycove, Edmonton

MLS® #E4433872

**\$635,000**

5 Bedroom, 3.50 Bathroom, 2,173 sqft

Single Family on 0.00 Acres

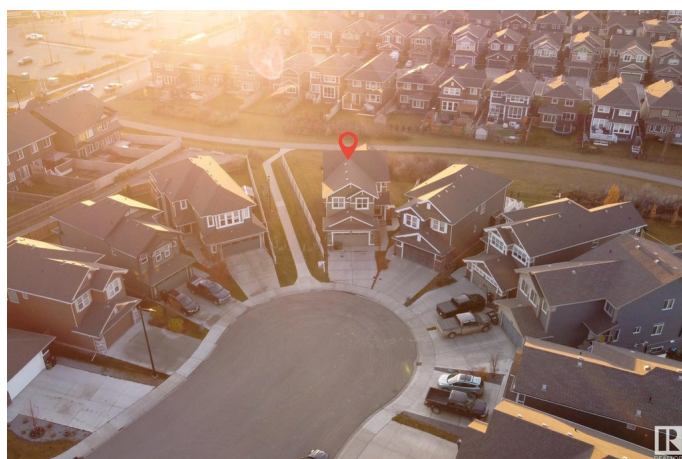
The Orchards At Ellerslie, Edmonton, AB

Welcome to this beautifully maintained almost 2200 sqft single-family home, nestled in a quiet crescent and surrounded by parks, scenic lakes, and endless walking trails. Backing onto walking trail adds more pleasure to sitting in backyard. Perfect for growing families, this 6-bedroom, 3.5-bathroom home offers both space and functionality in one of the area's most desirable neighborhoods. Step inside to discover a thoughtfully designed layout featuring a main floor den, ideal for a home office or study, and a walkthrough pantry connecting the mudroom to a stylish

Built in 2015

### Essential Information

MLS® #	E4433872
Price	\$635,000
Bedrooms	5
Bathrooms	3.50
Full Baths	3
Half Baths	1
Square Footage	2,173
Acres	0.00
Year Built	2015
Type	Single Family
Sub-Type	Detached Single Family



Style	2 Storey
Status	Active

### Community Information

Address	3938 Cherrycove
Area	Edmonton
Subdivision	The Orchards At Ellerslie
City	Edmonton
County	ALBERTA
Province	AB
Postal Code	T6X 2B3

### Amenities

Amenities	Ceiling 9 ft., Deck, No Animal Home, No Smoking Home
Parking	Double Garage Attached

### Interior

Interior Features	ensuite bathroom
Appliances	Dishwasher-Built-In, Dryer, Garage Opener, Hood Fan, Oven-Microwave, Refrigerator, Stove-Gas, Washer
Heating	Forced Air-1, Natural Gas
Stories	3
Has Suite	Yes
Has Basement	Yes
Basement	Full, Finished

### Exterior

Exterior	Wood, Vinyl
Exterior Features	Airport Nearby, Backs Onto Park/Trees, Corner Lot, Cul-De-Sac, Fenced, Landscaped, Low Maintenance Landscape, No Back Lane, Playground Nearby, Public Transportation, Schools, Shopping Nearby
Roof	Asphalt Shingles
Construction	Wood, Vinyl
Foundation	Concrete Perimeter

### School Information

Elementary	Jan Reimer School
Middle	Jan Reimer School
High	J. Percy Page High School

**Additional Information**

Date Listed	May 1st, 2025
Days on Market	14
Zoning	Zone 53
HOA Fees	300
HOA Fees Freq.	Annually

DATA IS DEEMED RELIABLE BUT IS NOT GUARANTEED ACCURATE BY THE REALTORS® ASSOCIATION OF EDMONTON. COPYRIGHT 2025 BY THE REALTORS® ASSOCIATION OF EDMONTON. ALL RIGHTS RESERVED.Trademarks are owned or controlled by the Canadian Real Estate Association (CREA) and identify real estate professionals who are members of CREA (REALTOR®, REALTORS®) and/or the quality of services they provide (MLS®, Multiple Listing Service®)

Listing information last updated on May 15th, 2025 at 11:32am MDT