

## \$235,000 - 13216 38 Street, Edmonton

MLS® #E4432590

**\$235,000**

4 Bedroom, 2.00 Bathroom, 933 sqft

Single Family on 0.00 Acres

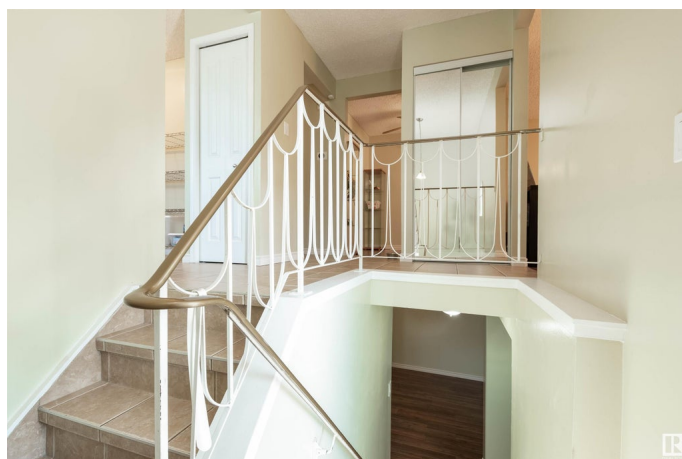
Belmont, Edmonton, AB

Bright and well-maintained half duplex near Kennedale Ravine! This 2+2 bedroom home features an updated kitchen with new counters, refreshed cabinets, and a newer dishwasher. The living and dining area is filled with natural light. The main bath offers dual sinks, a skylight, good storage, and a bright, modern feel. The primary bedroom has hardwood floors, a large closet with organizer, and sliding doors leading to a low-maintenance backyard with a stone patio—perfect for summer BBQs and entertaining. The fully finished basement includes brand new flooring, a spacious family room, bright bonus room, 3-piece bath, and a large bedroom with generous closet space. Also includes a large storage room, shed, and no back lane. Close to walking trails, schools, shopping, transit, and major routes. Plus—awesome neighbours!

Built in 1976

### Essential Information

MLS® #	E4432590
Price	\$235,000
Bedrooms	4
Bathrooms	2.00
Full Baths	2
Square Footage	933



Acres	0.00
Year Built	1976
Type	Single Family
Sub-Type	Half Duplex
Style	Bungalow
Status	Active

### **Community Information**

Address	13216 38 Street
Area	Edmonton
Subdivision	Belmont
City	Edmonton
County	ALBERTA
Province	AB
Postal Code	T5A 3G4

### **Amenities**

Amenities	Closet Organizers, Fire Pit, No Smoking Home, Patio, Skylight
Parking Spaces	2
Parking	Front Drive Access

### **Interior**

Appliances	Dishwasher-Built-In, Dryer, Refrigerator, Washer, Window Coverings
Heating	Forced Air-1, Natural Gas
Stories	2
Has Basement	Yes
Basement	Full, Partially Finished

### **Exterior**

Exterior	Wood, Stucco
Exterior Features	Fenced, Flat Site, Landscaped, Low Maintenance Landscape, No Back Lane, Park/Reserve, Playground Nearby, Public Transportation, Schools, Shopping Nearby
Roof	Asphalt Shingles
Construction	Wood, Stucco
Foundation	Concrete Perimeter

### **Additional Information**

Date Listed	April 24th, 2025
-------------	------------------

Days on Market 1

Zoning Zone 35

DATA IS DEEMED RELIABLE BUT IS NOT GUARANTEED ACCURATE BY THE REALTORS® ASSOCIATION OF EDMONTON. COPYRIGHT 2025 BY THE REALTORS® ASSOCIATION OF EDMONTON. ALL RIGHTS RESERVED. Trademarks are owned or controlled by the Canadian Real Estate Association (CREA) and identify real estate professionals who are members of CREA (REALTOR®, REALTORS®) and/or the quality of services they provide (MLS®, Multiple Listing Service®)

Listing information last updated on April 25th, 2025 at 7:17pm MDT