

## \$0 - 4612 4614 101 Street, Edmonton

MLS® #E4432174

**\$0**

0 Bedroom, 0.00 Bathroom,  
Industrial on 0.00 Acres

Papaschase Industrial, Edmonton, AB

• Comes with dedicated secured yard space  
• (2) 12' x 14' overhead doors  
• Fibre optics available  
• Located in one of the principle commercial nodes in Edmonton with convenient access to the Whitemud, Calgary Trail & Gateway Blvd, and Anthony Henday Drive

Built in 1977

### Essential Information

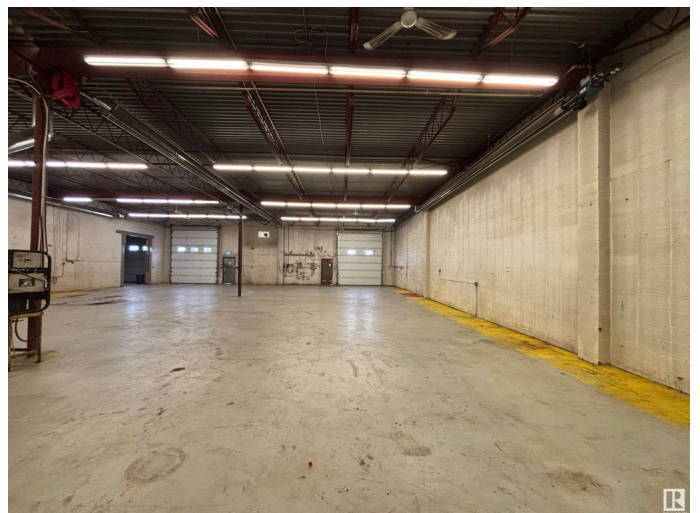
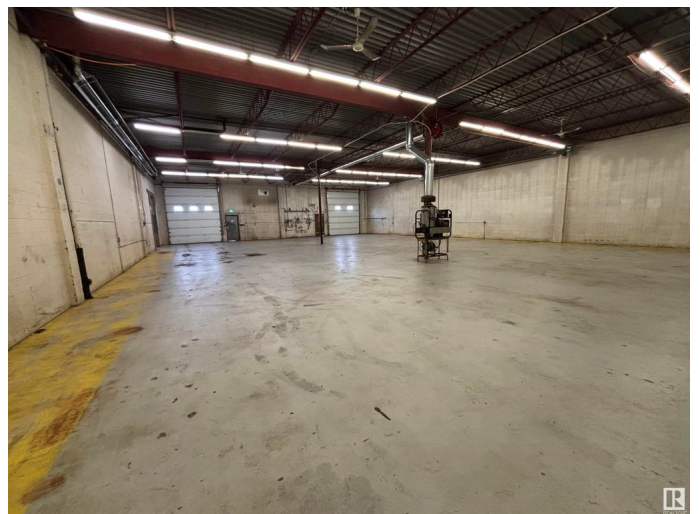
MLS® #	E4432174
Bathrooms	0.00
Acres	0.00
Year Built	1977
Type	Industrial
Status	Active

### Community Information

Address	4612 4614 101 Street
Area	Edmonton
Subdivision	Papaschase Industrial
City	Edmonton
County	ALBERTA
Province	AB
Postal Code	T6E 5G9

### Exterior

Exterior	Mixed
----------	-------



Construction           Mixed

**Additional Information**

Date Listed            April 22nd, 2025

Days on Market       141

Zoning                 Zone 41

DATA IS DEEMED RELIABLE BUT IS NOT GUARANTEED ACCURATE BY THE REALTORS® ASSOCIATION OF EDMONTON. COPYRIGHT 2025 BY THE REALTORS® ASSOCIATION OF EDMONTON. ALL RIGHTS RESERVED.Trademarks are owned or controlled by the Canadian Real Estate Association (CREA) and identify real estate professionals who are members of CREA (REALTOR®, REALTORS®) and/or the quality of services they provide (MLS®, Multiple Listing Service®)

Listing information last updated on September 10th, 2025 at 9:02am MDT