

Courtesy Of Dragic Janjic Of RE/MAX River City

## **\$328,888 - 1104 10152 104 Street, Edmonton**

MLS® #E4431205

**\$328,888**

2 Bedroom, 2.00 Bathroom, 852 sqft

Condo / Townhouse on 0.00 Acres

Downtown (Edmonton), Edmonton, AB

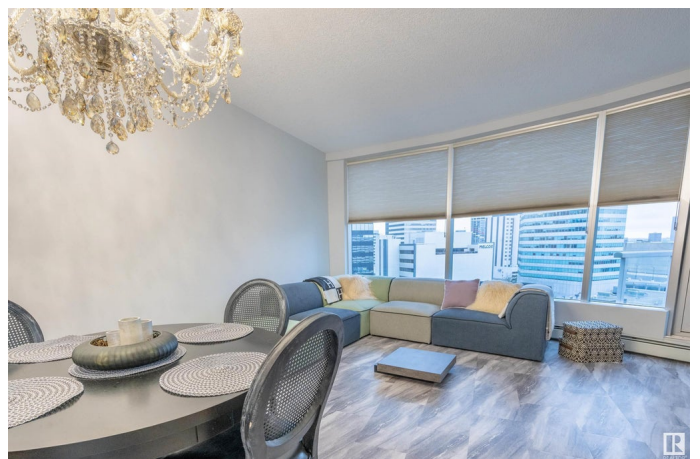
Envision the endless possibilities that await! Located in one of the most exquisite areas of the city, Icon 2 presents an exceptional opportunity to seamlessly integrate work, living, and social life into a single, extraordinary space. Step into this remarkable, fully renovated two-bedroom condo with southern exposure and revel in over 850 square feet of thoughtfully designed living space. This impeccable residence boasts numerous enhancements, including an in-suite laundry, a custom sliding barn-door concealing a built-in TV, showcasing the art of maximizing living areas. Modern accents adorn every corner, from the striking vinyl floor to the sleek kitchen complemented by a captivating feature wall adorned with stylish wallpaper. The master bedroom showcases a generously sized walk-in closet and a luxurious four-piece bathroom. Complete with a south-facing balcony boasting unparalleled city views, this unit stands as an epitome of sophistication and is unequivocally one of the finest in its class.

Built in 2009

### **Essential Information**

MLS® # E4431205

Price \$328,888





Bedrooms	2
Bathrooms	2.00
Full Baths	2
Square Footage	852
Acres	0.00
Year Built	2009
Type	Condo / Townhouse
Sub-Type	Apartment High Rise
Style	Single Level Apartment
Status	Active

### **Community Information**

Address	1104 10152 104 Street
Area	Edmonton
Subdivision	Downtown (Edmonton)
City	Edmonton
County	ALBERTA
Province	AB
Postal Code	T6J 1A7

### **Amenities**

Amenities	Intercom, Parking-Visitor, Secured Parking, See Remarks
Parking	Heated, Underground

### **Interior**

Appliances	Dishwasher-Built-In, Dryer, Refrigerator, Stove-Electric, Washer
Heating	Baseboard, Natural Gas
# of Stories	35
Stories	1
Has Basement	Yes
Basement	None, No Basement

### **Exterior**

Exterior	Concrete, Brick, Stone, Stucco
Exterior Features	Public Transportation, Schools, Shopping Nearby, View Downtown, See Remarks
Roof	EPDM Membrane
Construction	Concrete, Brick, Stone, Stucco
Foundation	Concrete Perimeter



**Additional Information**

Date Listed	April 16th, 2025
Days on Market	12
Zoning	Zone 12
Condo Fee	\$713

DATA IS DEEMED RELIABLE BUT IS NOT GUARANTEED ACCURATE BY THE REALTORS® ASSOCIATION OF EDMONTON. COPYRIGHT 2025 BY THE REALTORS® ASSOCIATION OF EDMONTON. ALL RIGHTS RESERVED.Trademarks are owned or controlled by the Canadian Real Estate Association (CREA) and identify real estate professionals who are members of CREA (REALTOR®, REALTORS®) and/or the quality of services they provide (MLS®, Multiple Listing Service®)

Listing information last updated on April 28th, 2025 at 10:48am MDT