

\$119,900 - N/A, Edmonton

MLS® #E4429887

\$119,900

2 Bedroom, 1.00 Bathroom, 811 sqft
Condo / Townhouse on 0.00 Acres

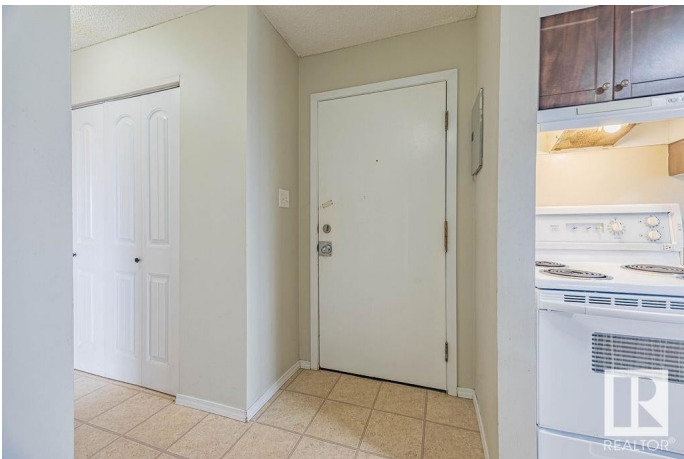
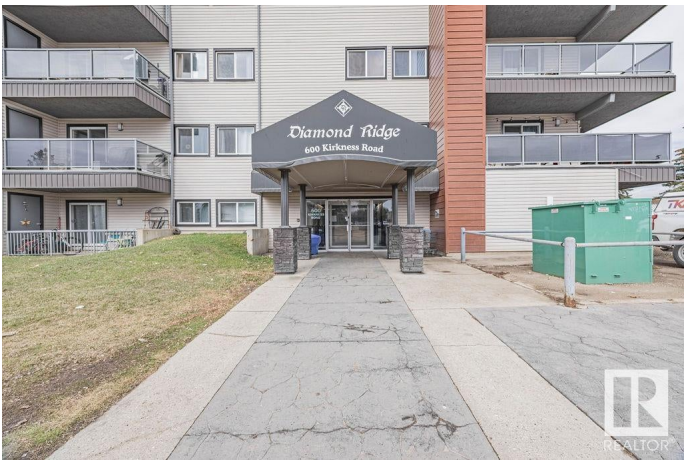
Kirkness, Edmonton, AB

This corner unit condo offers exceptional value, ideal for first-time buyers or investors. Conveniently located near schools, public transit, Manning Town Centre, and Anthony Henday, itâ€™s the perfect spot for easy access to everything. Inside, you'll find plenty of natural light and a spacious layout, with two large bedrooms. The smaller bedroom comfortably fits a king-sized bed, while the larger one includes a walk-through closet and ensuite access to a 4-piece bath. Enjoy extra storage with a hall closet, pantry, and additional balcony unit. The parking stall is right in front, making winter mornings easy, with additional parking available. The condo is well-managed, with fees covering heat and water. Recent updates include new siding and shingles. A healthy reserve fund rounds out this fantastic opportunity!

Built in 1981

Essential Information

MLS® #	E4429887
Price	\$119,900
Bedrooms	2
Bathrooms	1.00
Full Baths	1
Square Footage	811
Acres	0.00



Year Built	1981
Type	Condo / Townhouse
Sub-Type	Lowrise Apartment
Style	Single Level Apartment
Status	Active

Community Information

Address	N/A
Area	Edmonton
Subdivision	Kirkness
City	Edmonton
County	ALBERTA
Province	AB
Postal Code	T5Y 2H5

Amenities

Amenities	Patio, Storage-In-Suite
Parking	Stall

Interior

Interior Features	ensuite bathroom
Appliances	Dishwasher-Built-In, Refrigerator, Stove-Electric
Heating	Baseboard, Combination
# of Stories	4
Stories	1
Has Basement	Yes
Basement	None, No Basement

Exterior

Exterior	Wood, Vinyl
Exterior Features	Playground Nearby, Public Transportation, Schools, Shopping Nearby
Roof	Asphalt Shingles
Construction	Wood, Vinyl
Foundation	Concrete Perimeter

Additional Information

Date Listed	April 9th, 2025
Days on Market	19
Zoning	Zone 35

Condo Fee \$436

DATA IS DEEMED RELIABLE BUT IS NOT GUARANTEED ACCURATE BY THE REALTORS® ASSOCIATION OF EDMONTON. COPYRIGHT 2025 BY THE REALTORS® ASSOCIATION OF EDMONTON. ALL RIGHTS RESERVED.Trademarks are owned or controlled by the Canadian Real Estate Association (CREA) and identify real estate professionals who are members of CREA (REALTOR®, REALTORS®) and/or the quality of services they provide (MLS®, Multiple Listing Service®)

Listing information last updated on April 28th, 2025 at 9:47am MDT