

## \$429,900 - 8911 162 Street, Edmonton

MLS® #E4427690

**\$429,900**

3 Bedroom, 1.00 Bathroom, 1,031 sqft

Single Family on 0.00 Acres

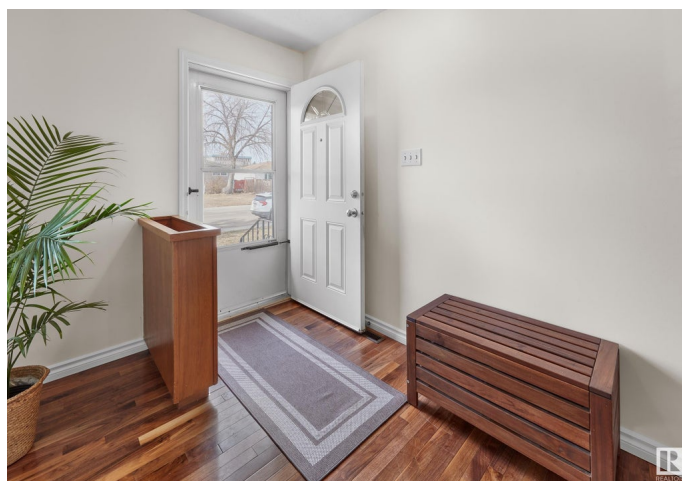
Meadowlark Park (Edmonton), Edmonton, AB

Meadowlark Park â€” the family community you have been looking for â€” with tree lined streets, parks/playgrounds, schools & close to all amenities! This 1965 home has 2062sqft of finished living space (including the basement) â€” 3 bedrooms, renovated 4-piece bath, oversized double detached heated garage â€” all located on a 5500sqft landscaped lot! Entering the home, you will love the newer windows, hardwood flooring & large living room that is open to the dining area & the open concept kitchen with ample storage & counter space. Down the hallway you will find the large primary bedroom, beds #2 & #3 are both a good size & the 4-piece bath completes the main floor. Downstairs step into the large family room & games/kidsâ€™ area & relax, the laundry room & large storage area complete the basement. Upgrades throughout the years â€” AC, roof, windows, flooring, paint & exterior & more!

Built in 1965

### Essential Information

|            |           |
|------------|-----------|
| MLS® #     | E4427690  |
| Price      | \$429,900 |
| Bedrooms   | 3         |
| Bathrooms  | 1.00      |
| Full Baths | 1         |



|                |                        |
|----------------|------------------------|
| Square Footage | 1,031                  |
| Acres          | 0.00                   |
| Year Built     | 1965                   |
| Type           | Single Family          |
| Sub-Type       | Detached Single Family |
| Style          | Bungalow               |
| Status         | Active                 |

### Community Information

|             |                            |
|-------------|----------------------------|
| Address     | 8911 162 Street            |
| Area        | Edmonton                   |
| Subdivision | Meadowlark Park (Edmonton) |
| City        | Edmonton                   |
| County      | ALBERTA                    |
| Province    | AB                         |
| Postal Code | T5R 2M5                    |

### Amenities

|                |  |
|----------------|--|
| Amenities      | Air Conditioner, Detectors Smoke, Parking-Extra, Vinyl Windows |
| Parking Spaces | 4  |
| Parking        | Double Garage Detached, Heated, Over Sized                     |

### Interior

|              |   |
|--------------|---|
| Appliances   | Dishwasher-Built-In, Dryer, Garage Control, Garage Opener, Refrigerator, Stove-Electric, Washer |
| Heating      | Forced Air-1, Natural Gas   |
| Stories      | 2   |
| Has Basement | Yes   |
| Basement     | Full, Finished  |

### Exterior

|                   |   |
|-------------------|---|
| Exterior          | Wood, Stucco  |
| Exterior Features | Back Lane, Fenced, Landscaped, Park/Reserve, Paved Lane, Playground Nearby, Public Transportation, Schools, Shopping Nearby |
| Roof              | Asphalt Shingles  |
| Construction      | Wood, Stucco  |
| Foundation        | Concrete Perimeter  |

### School Information

|            |                     |
|------------|---------------------|
| Elementary | MeadowLark School   |
| Middle     | Hillcrest School    |
| High       | Jasper Place School |

### **Additional Information**

|             |                  |
|-------------|------------------|
| Date Listed | March 27th, 2025 |
|-------------|------------------|

|                |    |
|----------------|----|
| Days on Market | 30 |
|----------------|----|

|        |         |
|--------|---------|
| Zoning | Zone 22 |
|--------|---------|

DATA IS DEEMED RELIABLE BUT IS NOT GUARANTEED ACCURATE BY THE REALTORS® ASSOCIATION OF EDMONTON. COPYRIGHT 2025 BY THE REALTORS® ASSOCIATION OF EDMONTON. ALL RIGHTS RESERVED.Trademarks are owned or controlled by the Canadian Real Estate Association (CREA) and identify real estate professionals who are members of CREA (REALTOR®, REALTORS®) and/or the quality of services they provide (MLS®, Multiple Listing Service®)

Listing information last updated on April 26th, 2025 at 10:47am MDT