

# \$209,900 - Range Road 204 Township Road 552, Rural Strathcona County

MLS® #E4423931

**\$209,900**

0 Bedroom, 0.00 Bathroom,  
Rural on 3.26 Acres

None, Rural Strathcona County, AB

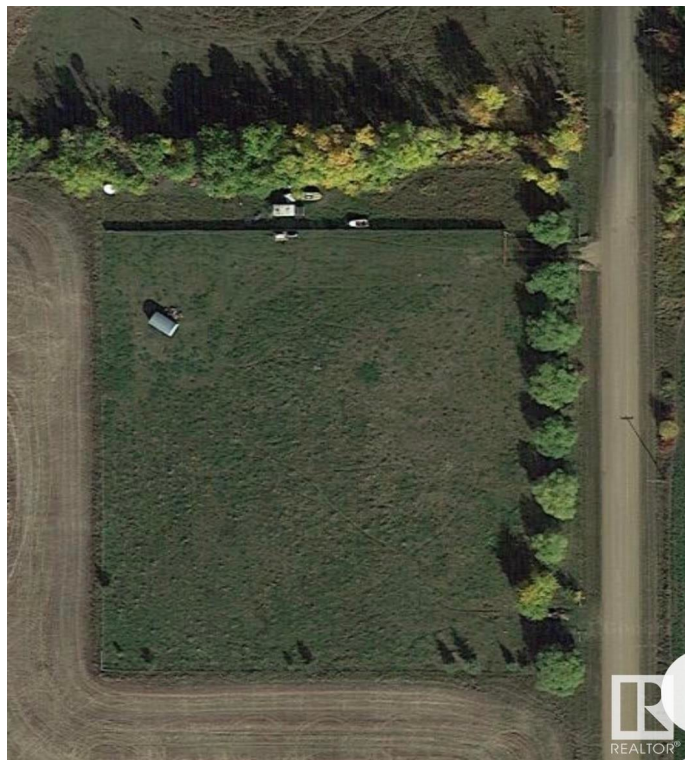
This 3.26 acres of land with a private setting and a view of Edmonton is ready to build your dream acreage. This property is fully fenced, cleared and is currently in grass and hay. There are 2 entrances onto the property off of RR204 and there is a fantastic building spot up on a hill that could accommodate a walkout basement. Power and Natural gas are at the property line and there is a municipal water line close by! Only a short 19 min drive to Fort Saskatchewan and 40 min to Edmonton.

## Essential Information

MLS® #	E4423931
Price	\$209,900
Bathrooms	0.00
Acres	3.26
Type	Rural
Sub-Type	Vacant Lot/Land
Status	Active

## Community Information

Address	Range Road 204 Township Road 552
Area	Rural Strathcona County
Subdivision	None
City	Rural Strathcona County



County	ALBERTA
Province	AB
Postal Code	T0B 0S0

## Exterior

Exterior Features   Fenced, Flat Site

## Additional Information

Date Listed        March 4th, 2025

Days on Market    55

Zoning              Zone 60

DATA IS DEEMED RELIABLE BUT IS NOT GUARANTEED ACCURATE BY THE REALTORS® ASSOCIATION OF EDMONTON. COPYRIGHT 2025 BY THE REALTORS® ASSOCIATION OF EDMONTON. ALL RIGHTS RESERVED. Trademarks are owned or controlled by the Canadian Real Estate Association (CREA) and identify real estate professionals who are members of CREA (REALTOR®, REALTORS®) and/or the quality of services they provide (MLS®, Multiple Listing Service®)

Listing information last updated on April 28th, 2025 at 8:17pm MDT