

## \$189,900 - 137 7825 71 Street, Edmonton

MLS® #E4421030

**\$189,900**

1 Bedroom, 1.00 Bathroom, 593 sqft

Condo / Townhouse on 0.00 Acres

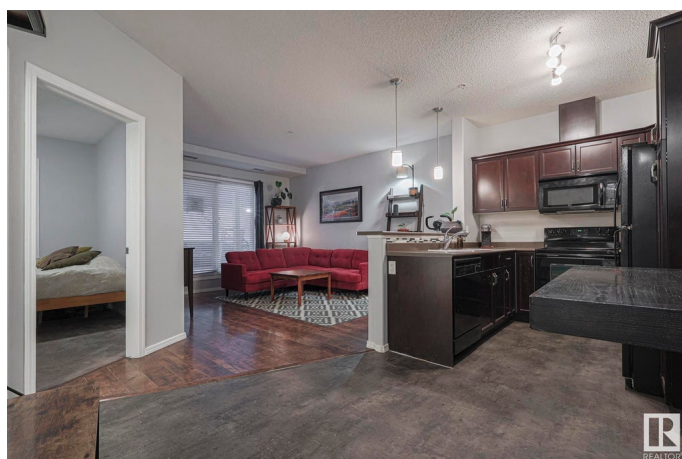
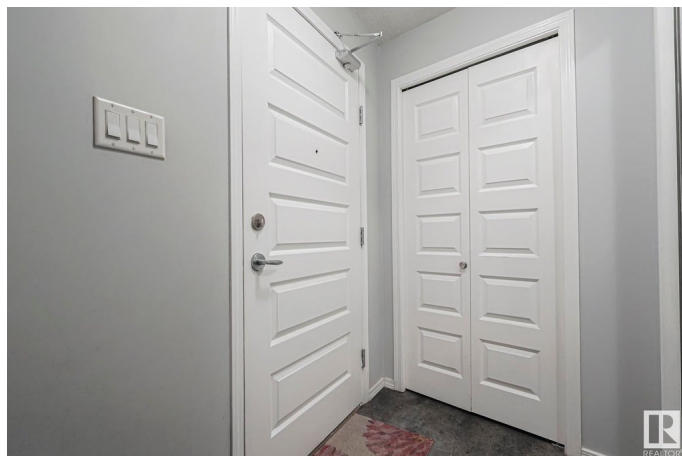
King Edward Park, Edmonton, AB

Welcome to your dream condo! This bright and spacious 1-bedroom, 1-bathroom suite offers the perfect blend of comfort and convenience in a quiet, well-connected area with affordable condo fees. With seamless access to transit, Sherwood Park Freeway, Whyte Ave, and just minutes from Bonnie Doon Mall, this location truly has it all. Step inside to discover a fantastic floor plan with high ceilings, a large bedroom, and a u-shaped kitchen featuring an eat-up breakfast bar—ideal for quick meals or entertaining. In-suite laundry, air conditioning, and one of the largest private decks in the building make everyday living easy and enjoyable. The building itself is packed with top-notch amenities, including two fitness areas, a social room, an expansive party room with a full kitchen, and an indoor pool. Two steam rooms, two saunas, and a large outdoor patio off the pool area add to the year-round enjoyment and relaxation. This is more than just a condo; it's a lifestyle waiting for you to enjoy!

Built in 2010

### Essential Information

|          |           |
|----------|-----------|
| MLS® #   | E4421030  |
| Price    | \$189,900 |
| Bedrooms | 1         |



|                |                        |
|----------------|------------------------|
| Bathrooms      | 1.00                   |
| Full Baths     | 1                      |
| Square Footage | 593                    |
| Acres          | 0.00                   |
| Year Built     | 2010                   |
| Type           | Condo / Townhouse      |
| Sub-Type       | Lowrise Apartment      |
| Style          | Single Level Apartment |
| Status         | Active                 |

### Community Information

|             |                    |
|-------------|--------------------|
| Address     | 137 7825 71 Street |
| Area        | Edmonton           |
| Subdivision | King Edward Park   |
| City        | Edmonton           |
| County      | ALBERTA            |
| Province    | AB                 |
| Postal Code | T6B 3R9            |

### Amenities

|                |   |
|----------------|---|
| Amenities      | Air Conditioner, Deck, Exercise Room, Guest Suite, Hot Tub, Parking-Visitor, Party Room, Pool-Indoor, Recreation Room/Centre, Sauna; Swirlpool; Steam, Secured Parking, Security Door, Social Rooms |
| Parking Spaces | 1   |
| Parking        | Underground   |
| Has Pool       | Yes   |

### Interior

|              |  |
|--------------|--|
| Appliances   | Air Conditioning-Central, Dishwasher-Built-In, Dryer, Microwave Hood Fan, Refrigerator, Stove-Electric, Washer |
| Heating      | Baseboard, Natural Gas   |
| # of Stories | 4  |
| Stories      | 1  |
| Has Basement | Yes  |
| Basement     | None, No Basement  |

### Exterior

|                   |  |
|-------------------|--|
| Exterior          | Wood, Stucco                               |
| Exterior Features | Landscaped, Public Transportation, Schools |

|              |                    |
|--------------|--------------------|
| Roof         | Tar & Gravel       |
| Construction | Wood, Stucco       |
| Foundation   | Concrete Perimeter |

**Additional Information**

|                |                     |
|----------------|---------------------|
| Date Listed    | February 10th, 2025 |
| Days on Market | 120                 |
| Zoning         | Zone 17             |
| Condo Fee      | \$398               |

DATA IS DEEMED RELIABLE BUT IS NOT GUARANTEED ACCURATE BY THE REALTORS® ASSOCIATION OF EDMONTON. COPYRIGHT 2025 BY THE REALTORS® ASSOCIATION OF EDMONTON. ALL RIGHTS RESERVED.Trademarks are owned or controlled by the Canadian Real Estate Association (CREA) and identify real estate professionals who are members of CREA (REALTOR®, REALTORS®) and/or the quality of services they provide (MLS®, Multiple Listing Service®)

Listing information last updated on June 9th, 2025 at 9:47pm MDT