

\$637,245 - 208 260 Bellerose Drive, St. Albert

\$637,245

Oakmont, St. Albert, AB

An architectural rendering of the proposed development at 1000 West Broadway. The scene is set at dusk, with a sky of soft pinks, oranges, and blues. On the left, a modern building with a large glass facade and a prominent vertical copper-colored fin is shown. In the center, a tall, multi-story residential building with a dark facade and balconies stands. To the right, a lower building with a dark roof and large windows is labeled 'RISTORANTE'. The foreground shows a wide street with a few cars and pedestrians, and a small tree on the left. The overall atmosphere is one of a modern, urban environment.



Essential Information

MLS® # E4404674

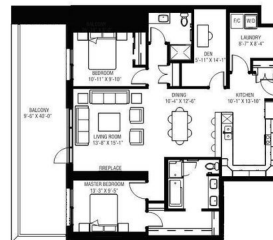
Price	\$637,245
-------	-----------

Bedrooms 2

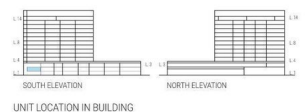
Bathrooms	2.00
-----------	------

RIVERBANK LANDING
LIFE IN BALANCE

SUITE - 2-PJ
TWO BEDROOM + DEN



SUITE AREA: 1,485 SF
BALCONY AREA: 381 SF
TOTAL LIVING SPACE: 1,866 SF



Rev 08.20.14
Concept plan subject to change. Room dimensions are approximate only.
Floor areas shown may vary from actual construction units.

REALTOR®

Full Baths	2
Square Footage	1,485
Acres	0.00
Year Built	2024
Type	Condo / Townhouse
Sub-Type	Apartment High Rise
Style	Single Level Apartment
Status	Active

Community Information

Address	208 260 Bellerose Drive
Area	St. Albert
Subdivision	Oakmont
City	St. Albert
County	ALBERTA
Province	AB
Postal Code	T8N 7P7

Amenities

Amenities	Car Wash, Detectors Smoke, Exercise Room, Guest Suite, Parking-Visitor, Party Room, Sprinkler System-Fire, Rooftop Deck/Patio
Parking	Heated, Parkade, Stall, Underground

Interior

Interior Features	ensuite bathroom
Appliances	Dishwasher-Built-In, Microwave Hood Fan, Oven-Built-In, Oven-Microwave, Refrigerator, Stacked Washer/Dryer, Stove-Countertop Electric
Heating	Fan Coil, In Floor Heat System, Electric, Water
# of Stories	14
Stories	1
Has Basement	Yes
Basement	None, No Basement

Exterior

Exterior	Concrete, Metal, Stucco
Exterior Features	Golf Nearby, Landscaped, Public Transportation, River Valley View, Shopping Nearby
Roof	EPDM Membrane

Construction	Concrete, Metal, Stucco
Foundation	Concrete Perimeter

Additional Information

Date Listed	September 3rd, 2024
Days on Market	333
Zoning	Zone 24
Condo Fee	\$720

DATA IS DEEMED RELIABLE BUT IS NOT GUARANTEED ACCURATE BY THE REALTORS® ASSOCIATION OF EDMONTON. COPYRIGHT 2025 BY THE REALTORS® ASSOCIATION OF EDMONTON. ALL RIGHTS RESERVED.Trademarks are owned or controlled by the Canadian Real Estate Association (CREA) and identify real estate professionals who are members of CREA (REALTOR®, REALTORS®) and/or the quality of services they provide (MLS®, Multiple Listing Service®)

Listing information last updated on August 2nd, 2025 at 4:02am MDT