

## \$0 - 12849 52 Street, Edmonton

---

MLS® #E4365048

**\$0**

0 Bedroom, 0.00 Bathroom,  
Industrial on 0.00 Acres

Kennedale Industrial, Edmonton, AB

Located in the rapidly growing commercial district of North-East Edmonton, in Kennedale Plaza, this Flex/Warehouse-Office building offers light bay industrial space, upgraded with modern-high efficient heating/cooling and lighting systems and 3-phase power service for your business needs. Kennedale offers 12 x 14 Grade overhead doors, 18-20 ft clear to ceiling and 90 ft bay depth. High quality construction with efficient structures. Significant parking available. FLEX office/warehouse offers the option for 100% office or part office/ part warehouse. Unit 12865 - 3,200sqft with \$6.00/sqft promotional rate available for immediate occupancy! This open warehouse space includes a reception area, one 12x14 overhead door, mezzanine storage, and a washroom. Another bay of ~3,000 sqft. may become available by the end of September 2025. Potentially available ~3,000 sqft. bay space by the end of September 2025. The unit features an overhead door, a washroom, an office space and heating system



Built in 1980

### Essential Information

MLS® #	E4365048
Bathrooms	0.00

Acres	0.00
Year Built	1980
Type	Industrial
Status	Active

### Community Information

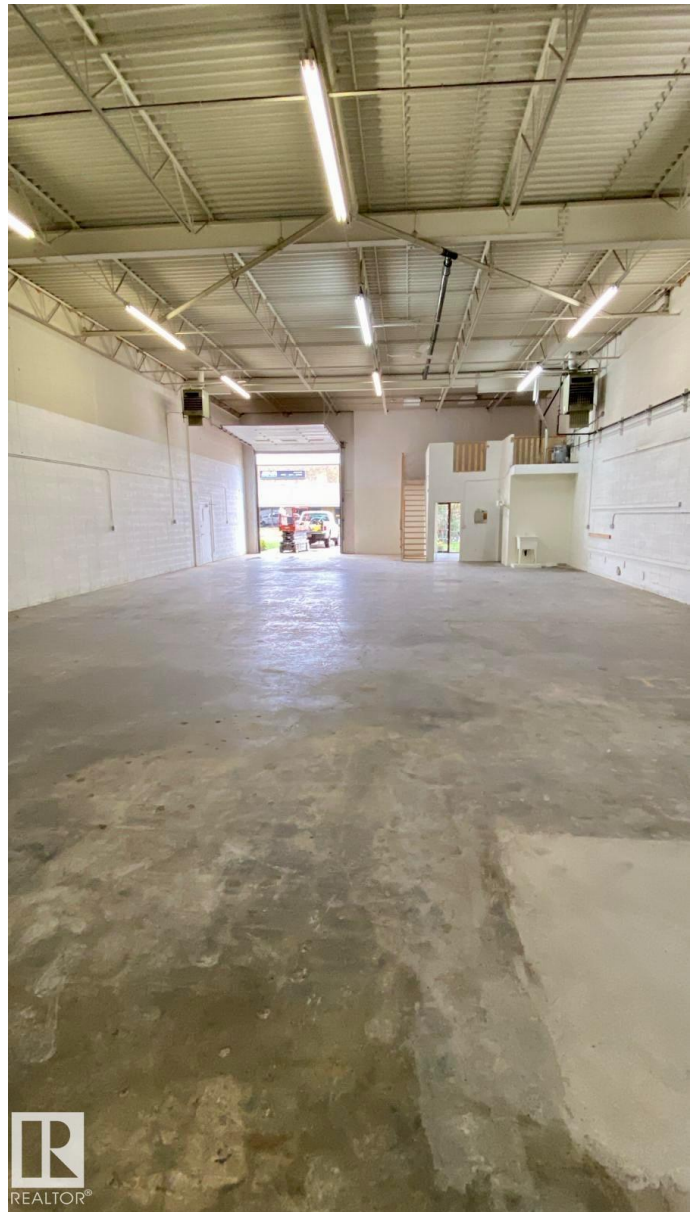
Address	12849 52 Street
Area	Edmonton
Subdivision	Kennedale Industrial
City	Edmonton
County	ALBERTA
Province	AB
Postal Code	T5A 3P8

### Exterior

Exterior	Mixed
Construction	Mixed

### Additional Information

Date Listed	November 10th, 2023
Days on Market	670
Zoning	Zone 06



DATA IS DEEMED RELIABLE BUT IS NOT GUARANTEED ACCURATE BY THE REALTORS® ASSOCIATION OF EDMONTON. COPYRIGHT 2025 BY THE REALTORS® ASSOCIATION OF EDMONTON. ALL RIGHTS RESERVED. Trademarks are owned or controlled by the Canadian Real Estate Association (CREA) and identify real estate professionals who are members of CREA (REALTOR®, REALTORS®) and/or the quality of services they provide (MLS®, Multiple Listing Service®)

Listing information last updated on September 10th, 2025 at 1:32pm MDT